

Imray Correction Notice IC2000-7

17 April 2024

Chart 2000 WGS 84
Edition 2022

Versions available:

New Edition (corrected to September 2022)

NOTES

Below is a complete list of corrections issued since the 2022 edition of this chart was published.

Each correction is issued with an ILNW reference number and year.

Corrections are listed chronologically in ascending order.

1 Approaches to Lowestoft (2000.10)

Insert obstn symbol with assoc lgd *Unexploded Ordnance* (2022) in 52°26'·09N 1°47'·49E (ILNW 459/22)

2 Aldeburgh Ridge (2000.2 & 2000.10)

Insert depth 2.3m and extend 5m contour to enclose in 52°07'·74N 1°37'·69E. Delete depth 3.5m close NW (ILNW 460/22)

3 Barrow Deep & West Barrow (2000.1)

Insert drying height:

-1.4m in 51°37'·10N 1°12'·60E enc. by 0m contour

-0.1m in 51°33'·79N 1°08'·08E extend approx. 0m contour NW to enc.

Insert depth:

1.3m in 51°33'·61N 1°07'·77E extend approx. 2m contour NW to enc.

0.6m in 51°34'·52N 1°07'·49E enc. by 2m contour (ILNW 470/22)

4 Whitaker Channel (2000.8) (*correction superseded see ILNW 20/23*)

Delete Y special purpose pillar Lt buoy Fl(5)Y in 51°39'·83N 1°01'·56E (ILNW 8/23)

5 Sunken Buxey, Approaches to River Crouch (2000.8)

Insert accompanying block correction centred on 51°39'·76N 1°01'·65E (ILNW 20/23)

6 Orford Haven (2000.2 & 2000.3)

For detailed information about the River Ore entrance consult the accompanying chartlet (survey 02/23). For further details regarding the latest pilotage information of this area see www.eastcoastpilot.com (ILNW 116/23)

7 Woodbridge Haven (2000.1, 2000.3 & 2000.10)

Move:

RW safewater Lt buoy **Woodbridge Haven** Mo(A)15s to 51°58'·24N 1°23'·86E (2000.1, 2000.3 & 2000.10)

G con buoy **Mid Knoll** to 51°58'·67N 1°23'·83E (2000.3)

R can buoy **West Knoll** to 51°58'·82N 1°23'·64E (2000.3)

R can buoy **Knoll Spit** to 51°59'·00N 1°23'·48E (2000.3)

G con buoy **Deben** to 51°59'·05N 1°23'·53E (2000.3)

For detailed information about the River Deben consult the accompanying chartlet (survey 02/23). For further details regarding the latest pilotage information of this area see www.eastcoastpilot.com (ILNW 117/23)

8 Woodbridge Haven (2000.4)

Delete RW safewater Lt buoy **Woodbridge Haven** Mo(A)15s in 51°57'·99N 1°23'·63E (ILNW 117/23)

9 Holm Sand (2000.11 Panel 1)

Insert depth:

1.4m in 52°29'·68N 1°47'·01E. Delete depth 6.6m close S

1.8m in 52°28'·29N 1°47'·70E. Delete depth 3.6m close S

1.4m in 52°28'·05N 1°47'·70E. Delete 6.6m Wk close W and 3.3m depth close S

0.9m in 52°27'·71N 1°47'·58E. Delete depth 2.5m and 2.8m close

Extend 2m contour of Holm Sand E to enclose above changes (ILNW 118/23)

10 Sunk Sand & Long Sand (2000.1)

Insert:

Depth 0.9m in 51°41'77N 1°25'57E. Delete depth 1.8m close N

Drying height -0.3m in 51°42'32N 1°30'32E. Extend 0m contour NW to enclose and delete 3.2m Wk close E (ILNW 165/23)

11 Woodbridge Haven (2000.3)

Insert drying height -0.1m enclosed by 0m contour in 51°58'73N 1°23'83E (ILNW 198/23)

12 Sizewell Bank E (2000.10)

Move Y special pillar Lt buoy FI(5)Y.20s (2 buoys) PA in 52°12'60N 1°41'10E to 52°12'45N 1°41'06E (ILNW 203/23)

13 Minsmere Haven (2000.10)

Artificial nesting structure construction works are in progress, navigate with caution in the vicinity. Insert Lt star **ANS 1** FI. Y.5s3M in 52°14'29N 1°39'02E (ILNW 219/23)

14 Lowestoft Bank (2000.11 Panel 1)

Artificial nesting structure construction works are in progress, navigate with caution in the vicinity.

Insert Lt star:

ANS 2 FI.Y.5s3M in 52°27'64N 1°45'81E

ANS 3 FI.Y.2.5s3M in 52°27'72N 1°45'82E (ILNW 219/23)

15 Ray Sand (2000.8)

Insert Y special pillar buoy **Raysand North** in 51°40'81N 1°00'57E

Move Y can buoy **Raysand** in 51°39'10N 0°59'50E to 51°39'84N 1°00'57E

Delete RW safewater pillar buoy

Raysand North in 51°40'70N 0°59'50E

Raysand Middle in 51°40'00N 0°59'00E (ILNW 228/23)

16 Aldeburgh Ridge (2000.2 & 2000.10)

Insert depth 0.9m in 52°06'84N 1°36'83E. Extend contour to enclose (ILNW 288/23)

17 Middle Sunk SW (2000.1)

Insert wreck depth 2.6m in 51°38'42N 1°17'29E (ILNW 374/23)

18 Approaches to Lowestoft (2000.10 & 2000.11 Panel 1)

Insert overfalls symbol in 52°26'29N 1°46'84E (ILNW 146/24)

19 Long Sand & Kentish Knock (2000.1)

Insert depth:

1.0m in 51°42'46N 1°33'17E and extend 2m contour SE to enclose. Delete depth 3.7m close N

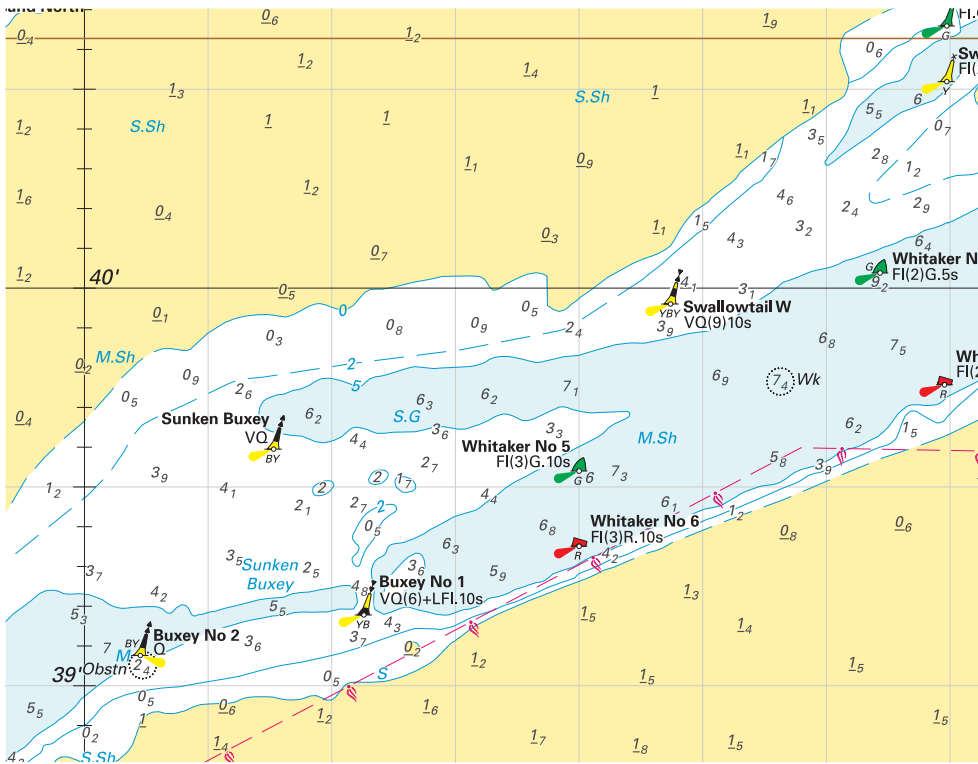
0.9m in 51°42'16N 1°32'86E and extend 2m contour SE to enclose

1.1m in 51°41'93N 1°32'42E and extend 2m contour S to enclose

0.7m in 51°36'49N 1°35'44E and extend 2m contour N to enclose

0.1m in 51°36'42N 1°35'15E and extend 2m contour N to enclose

0.9m in 51°36'17N 1°34'69E and extend 2m contour W to enclose. Delete depth 8.1m close SW (ILNW 185/24)



Block correction for 2000.8
ILNW 20/23

Caution

This chart is not to be used for navigation. It is based on a survey made by Trinity House on 8th February 2023. Users are reminded that depths are subject to constant change and consequently this chart should be used with extreme caution as the situation is likely to be different from the one depicted on the date of the survey.

Neither Trinity House nor the publisher will accept any liability for loss, injury or damage incurred by misuse of the data in this chart. Navigators are advised to seek confirmation of the latest situation before attempting to enter the river from the ECP Honorary Port Pilot and Orford Harbourmaster Matt Smy ☎ 07528 092635, or call *Chantry* on VHF Ch 08 (although note that he is based at Orford and may be out of radio range from the river entrance).

Soundings in metres at Lowest Astronomical Tide (LAT). Positions are referred to WGS84 datum.

Imray Laurie Norie & Wilson Ltd.
www.imray.com

© British Crown Copyright, 2023.

All rights reserved.



52°03'N

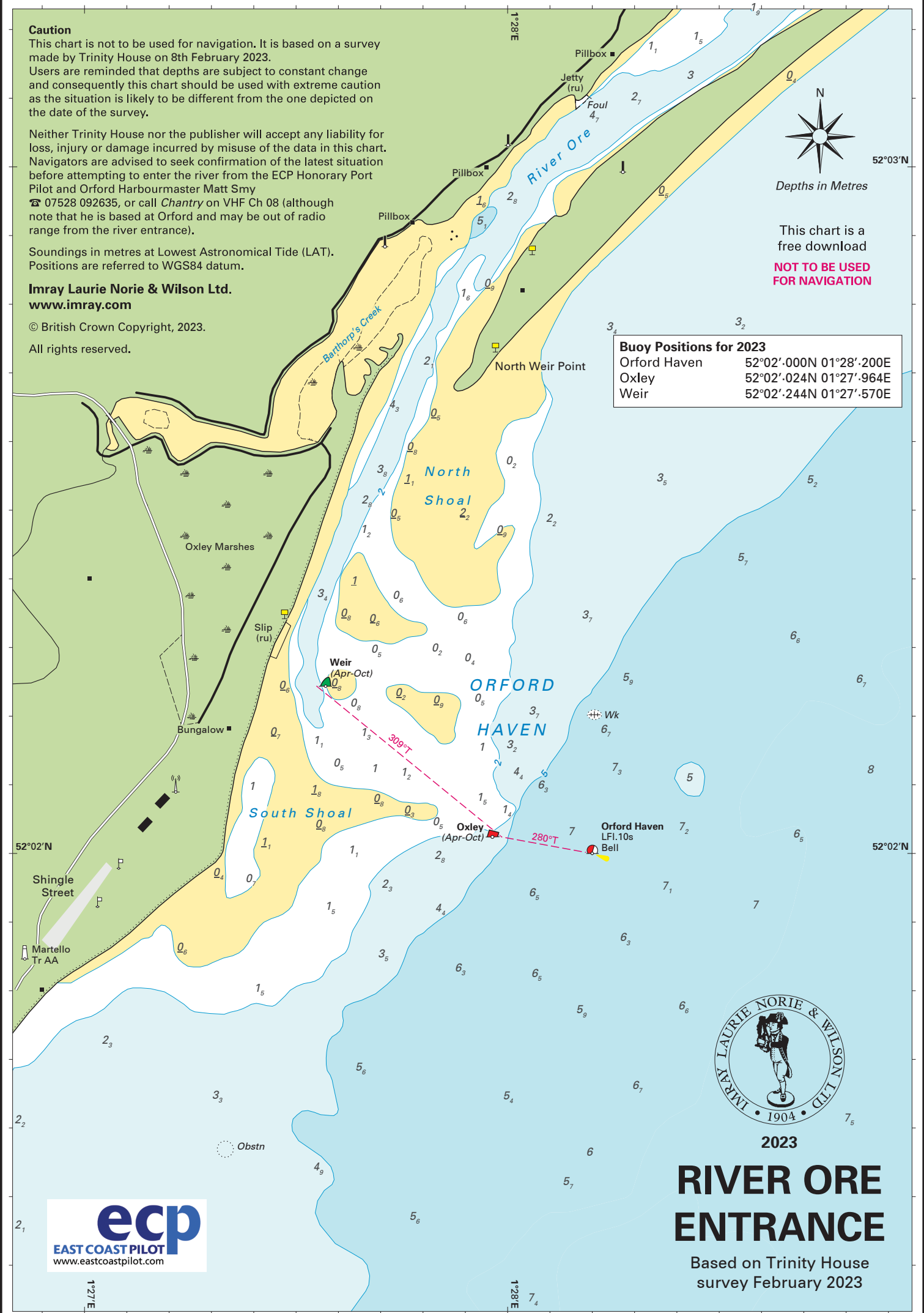
Depths in Metres

This chart is a free download

NOT TO BE USED FOR NAVIGATION

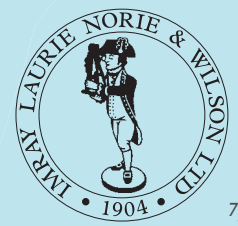
Buoy Positions for 2023

Orford Haven	52°02'.000N 01°28'.200E
Oxley	52°02'.024N 01°27'.964E
Weir	52°02'.244N 01°27'.570E



52°02'N

52°02'N



2023

RIVER ORE ENTRANCE

Based on Trinity House survey February 2023



1°27'E

1°28'E

2,1

2,2

52°02'N

52°02'N

7,5

8

6,7

5,2

3,2

52°03'N

7,4

5,7

6

6,7

6,6

6,3

7,3

5,9

3,7

3,4

0,5

1,1

1,9

1°28'E

1°28'E

1,6

2,1

0,8

0,5

1,5

3,5

5,6

7,4

1°28'E

1°28'E

1,6

2,1

0,8

0,5

1,5

3,5

5,6

7,4

1°28'E

1°28'E

1,6

2,1

0,8

0,5

1,5

3,5

5,6

7,4

1°28'E

1°28'E

1,6

2,1

0,8

0,5

1,5

3,5

5,6

7,4

1°28'E

1°28'E

1,6

2,1

0,8

0,5

1,5

3,5

5,6

7,4

1°28'E

1°28'E

1,6

2,1

0,8

0,5

1,5

3,5

5,6

7,4

1°28'E

1°28'E

1,6

2,1

0,8

0,5

1,5

3,5

5,6

7,4

1°28'E

1°28'E

1,6

2,1

0,8

0,5

1,5

3,5

5,6

7,4

1°28'E

1°28'E

1,6

2,1

0,8

0,5

1,5

3,5

5,6

7,4

1°28'E

1°28'E

1,6

2,1

0,8

0,5

1,5

3,5

5,6

7,4

1°28'E

1°28'E

1,6

2,1

0,8

0,5

1,5

3,5

5,6

7,4

1°28'E

1°28'E

1,6

2,1

0,8

0,5

1,5

3,5

5,6

7,4

52°02'N

2,2

2,1

7,4

1°28'E

1°28'E

1,6

2,1

0,8

0,5

1,5

3,5

5,6

7,4

52°02'N

2,2

2,1

7,4

1°28'E

1°28'E

1,6

2,1

0,8

0,5

1,5

3,5

5,6

7,4

52°02'N

2,2

2,1

7,4

1°28'E

1°28'E

1,6

2,1

0,8

0,5

1,5

3,5

5,6

7,4

52°02'N

2,2

2,1

7,4

1°28'E

1°28'E

1,6

2,1

0,8

0,5

1,5

3,5

5,6

7,4

52°02'N

2,2

2,1

7,4

1°28'E

1°28'E

1,6

2,1

0,8

0,5

1,5

3,5

5,6

7,4

52°02'N

2,2

2,1

7,4

1°28'E

1°28'E

1,6

2,1

0,8

0,5

1,5

3,5

5,6

7,4

52°02'N

2,2

2,1

7,4

1°28'E

1°28'E

1,6

2,1

0,8

0,5

1,5

3,5

5,6

7,4

52°02'N

2,2

2,1

7,4

1°28'E

1°28'E

1,6

2,1

0,8

0,5

1,5

3,5

5,6

7,4

52°02'N

2,2

2,1

7,4

1°28'E

1°28'E

1,6

2,1

0,8

0,5

1,5

3,5

5,6

7,4

52°02'N

2,2

2,1

7,4

1°28'E

1°28'E

1,6

2,1

0,8

0,5

1,5

3,5

5,6

7,4

52°02'N

2,2

2,1

7,4

1°28'E

1°28'E

1,6

2,1

0,8

0,5

1,5

3,5

5,6

7,4

52°02'N

2,2

2,1

<



Depths in Metres

This chart is a free download
NOT TO BE USED FOR NAVIGATION



Caution

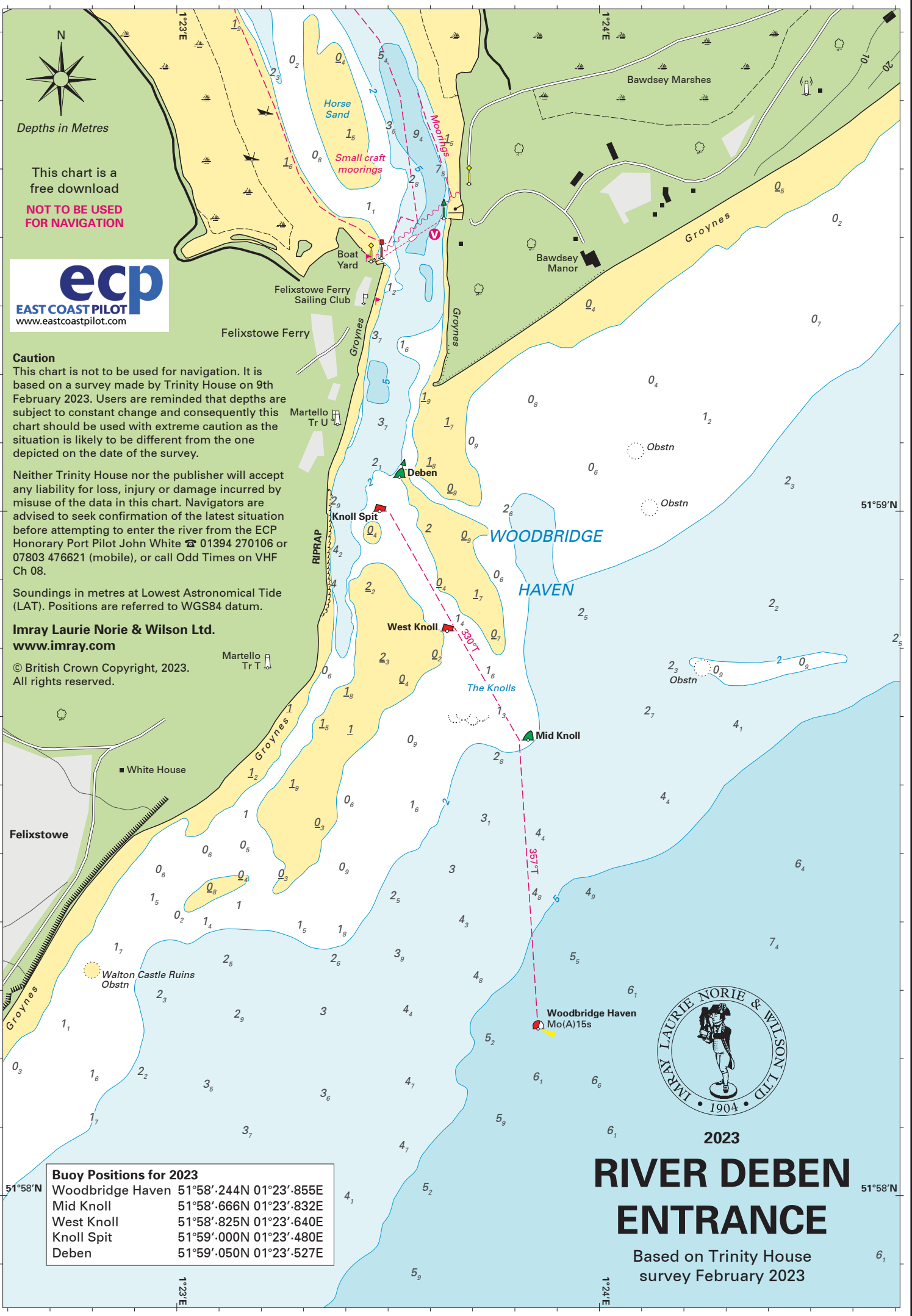
This chart is not to be used for navigation. It is based on a survey made by Trinity House on 9th February 2023. Users are reminded that depths are subject to constant change and consequently this chart should be used with extreme caution as the situation is likely to be different from the one depicted on the date of the survey.

Neither Trinity House nor the publisher will accept any liability for loss, injury or damage incurred by misuse of the data in this chart. Navigators are advised to seek confirmation of the latest situation before attempting to enter the river from the ECP Honorary Port Pilot John White ☎ 01394 270106 or 07803 476621 (mobile), or call Odd Times on VHF Ch 08.

Soundings in metres at Lowest Astronomical Tide (LAT). Positions are referred to WGS84 datum.

Imray Laurie Norie & Wilson Ltd.
www.imray.com

© British Crown Copyright, 2023.
All rights reserved.



Buoy Positions for 2023	
Woodbridge Haven	51°58'.244N 01°23'.855E
Mid Knoll	51°58'.666N 01°23'.832E
West Knoll	51°58'.825N 01°23'.640E
Knoll Spit	51°59'.000N 01°23'.480E
Deben	51°59'.050N 01°23'.527E



2023

RIVER DEBEN ENTRANCE

Based on Trinity House survey February 2023

51°59'N

51°58'N

1°23'E

1°24'E