

# Imray Correction Notice ICC38-2

16 February 2024

## Chart C38 WGS 84 Edition 2016

### Versions available:

New Edition (corrected to April 2016)  
Update (corrected to July 2017)  
Update (corrected to July 2018)  
Update (corrected to July 2019)  
Update (corrected to February 2021)  
Update (corrected to February 2022)  
Update (corrected to February 2023)  
Update (corrected to February 2024)

### NOTES

Below is a complete list of corrections issued since the 2016 edition of this chart was published.

Each correction is issued with an ILNW reference number and year.

Corrections are listed chronologically in ascending order.

For Update versions of this chart, please check the bottom left corner of the chart to determine the last applied correction.

Any further corrections will be applicable from that point onwards.

#### 1 Pointe de Gâvres SE and Presqu'île de Quiberon N

Insert Y special can Lt buoy Fl.Y.4s in:

47°39'50N 3°19'29W

47°39'83N 3°17'12W

47°39'49N 3°16'45W

47°38'34N 3°17'06W

47°35'66N 3°10'22W

47°34'47N 3°12'16W (ILNW 366/16)

#### 2 Automatic Identification Systems (Main chart & Plan F)

Insert racon sym. & assoc. lgd AIS at Lt:

**Les Moutons** in 47°46'48N 4°01'69W (Main chart)

**Penfret** in 47°43'26N 3°57'19W (Main chart & Plan F)

**Birvideaux** in 47°29'15N 3°17'47W (Main chart) (ILNW 563/16)

#### 3 Îles de Glénan (Main chart & Plan F)

Insert rock which covers and uncovers sym. enclosed by dangerline in:

47°43'48N 4°01'01W (Main chart & Plan F)

47°43'07N 4°00'92W (Main chart & Plan F)

47°42'17N 4°00'13W (Main chart)

Delete sounding 0.3 close by (Plan F)

Insert rock awash sym. enclosed by dangerline in 47°42'19N 4°00'48W (Main chart) (ILNW 574/16)

#### 4 Anse de Bénodet (correction superseded – see ILNW 354/17)

Insert underwater rock sym. enclosed by dangerline in:

47°50'61N 4°09'44W

47°50'57N 4°09'43W (ILNW 584/16)

#### 5 Concarneau (Plan B)

Move G con. buoy with triangle topmark from 47°51'86N 3°54'98W to 47°51'87N 3°54'91W (ILNW 606/16)

#### 6 Quiberon S

Insert racon sym. & assoc. lgd AIS at Lt DirQ.G.5m16M in 47°28'62N 3°07'19W (ILNW 3/17)

#### 7 Port Maria

Amend Lt to Oc(2)G&R in 47°28'58N 3°07'36W (ILNW 127/17)

#### 8 Loctudy (correction superseded – see ILNW 354/17)

Amend duration of Lt to 15s in 47°49'88N 4°09'56W (ILNW 325/17)

#### 9 Loctudy

Insert accompanying block correction centred on 47°49'35N 4°08'69W (ILNW 354/17)

#### 10 Trévignon W

Insert circular dangerline and legend *Obstn* in 47°48'05N 3°54'75W (ILNW 390/17)

#### 11 Concarneau (Plan B)

Insert label *Less Water* centred on 47°51'10N 3°55'13W

Replace depth:

1.4m with depth 0.7m in 47°51'45N 3°55'59W

1.1m with depth 0.5m in 47°51'28N 3°55'43W (ILNW 354/18)

**12 L'Aven (Plan C)**

Replace depth 0.6m with depth 0.2m in 47°48'·34N 3°44'·28W (ILNW 355/18)

**13 Doëlan (Plan E)**

Replace depth 0.2m with drying Rk sym. plus assoc. label drying height -0.9m in 47°46'·11N 3°37'·04W (ILNW 356/18)

**14 Îles de Glénan North (Plan F)**

Numerous depths less than charted exist in the vicinity of the Îles de Glénan. The most significant are as follows:

Insert depth:

0.1m in 47°42'·96N 3°59'·08W. Delete depth 0.5m close SW

0.1m in 47°42'·90N 3°57'·15W. Delete depth 0.8m close S

Insert Rk awash sym. in 47°42'·82N 3°57'·16W

Insert drying Rk sym. plus assoc. label drying height:

-1.0m in 47°42'·36N 4°00'·23W

-0.6m in 47°42'·70N 3°57'·10W

Replace depth:

1.4m with depth 0.9m in 47°42'·81N 4°00'·04W

1.6m with depth 0.4m in 47°42'·67N 3°57'·83W

1.0m with depth 0.5m in 47°42'·65N 3°57'·68W

0.5m with drying Rk sym. in 47°42'·46N 3°56'·93W

Yachtsmen are advised to navigate with caution in the area. (ILNW 357/18)

**15 Île de Groix S**

Insert depth 0.1m in 47°36'·96N 3°26'·49W (ILNW 358/18)

**16 Île de Penfret (Plan F)**

Amend range of Lt **Penfret** Q.34m12M to 11M in 47°43'·27N 3°57'·18W. FI.R Lt & AIS remain unchanged. (ILNW 359/18)

**17 Île de Penfret (Plan F)**

Amend Lt desc.

FI(2)6s9m3M to FI(2)6s4m3M at **La Pie** Lt Bn in 47°43'·75N 3°59'·75W

FI(3)5s2M to VQ(3)5s2M at BYB E cardinal Lt Bn in 47°43'·27N 3°59'·21W (ILNW 360/18)

**18 Île de Penfret (Main chart & Plan F)**

Amend Lt **Penfret** FI.R.5s36m21M to FI.R.6s36m19M (FI.R.6s19M main chart) in 47°43'·27N 3°57'·18W. Q Lt & AIS remain unchanged. (ILNW 544/18)

**19 Presqu'île de Quiberon, Port Haliguen**

Insert Lt desc. FI(2)WR.6s10m10/7M at Lt in 47°29'·36N 3°05'·94W (ILNW 137/19)

**20 Lorient (Plan G)**

Insert rock which covers & uncovers plus assoc. drying height -0.1m in 47°43'·78N 3°21'·28W (ILNW 441/19)

**21 Pte du Talut NW**

Delete racon sym. & assoc. lgd AIS at Lt Oc(2)WRG.6s22m11/8M in 47°41'·97N 3°27'·67W (ILNW 152/20)

**22 Quiberon**

Delete AIS from Lt DirQ.G.13m17M in 47°28'·75N 3°07'·16W. Lt characteristics remain unchanged. (ILNW 192/20)

**23 Quiberon**

Delete racon sym and assoc lgd AIS at Lt Dir.Q.G.5m16M in 47°28'·62N 3°07'·19W (ILNW 398/20)

**24 Les Moutons**

Delete AIS at Lt **Les Moutons** Iso.WRG.2s1m15-11M in 47°46'·48N 4°01'·67W (ILNW 495/20)

**25 Quiberon S**

BRB isolated danger buoy **An Tréac'h** is now lit. Add legend FI(2)10s in 47°27'·92N 3°07'·20W (ILNW 506/20)

**26 Île de Penfret (Main chart & Plan F)**

Delete racon sym and assoc lgd AIS at Lt in 47°43'·27N 3°57'·18W (ILNW 530/20)

**27 Lorient SE**

Delete Building (18) and assoc sym in 47°41'·54N 3°18'·59W (ILNW 33/21)

**28 Birvideaux**

Delete racon symbol and assoc. lgd AIS at Lt bn **Birvideaux** FI(2)6s24m10M in 47°29'·15N 3°17'·47W (ILNW 121/21)

**29 Larmor-Plage E (Main chart & Plan G)**

Delete WB Bn in 47°42'·39N 3°22'·44W (ILNW 391/21)

**30 Ile de St Nicolas E (Main chart & Plan F)**

Main chart

Delete islet height (4) in 47°43'·52N 3°59'·52W

Plan F

Delete islet height (3) in 47°43'·55N 3°59'·52W (ILNW 574/21)

**31 Approaches to Lorient (Main chart & Plan G)**

Amend depth 1.6m to 1.1m in 47°41'·47N 3°24'·31W (ILNW 18/22)

**32 Île de Groix SE**

Insert Y special can Lt buoy Fl.Y.4s in 47°35'·92N 3°19'·59W (ILNW 34/22)

**33 L'Aven (Plan C)**

Insert lgd *Moorings* centred on 47°48'·76N 3°44'·55W (ILNW 35/22)

**34 Anse de Bénodet**

Move S cardinal spar buoy in 47°51'·41N 4°07'·32W to 47°51'·24N 4°07'·17W (ILNW 36/22)

**35 Île de St Nicolas W (Plan F)**

Insert nature reserve symbol, duck, in 47°43'·40N 4°00'·51W (ILNW 37/22)

**36 Concarneau (Plan B)**

Insert:

depth 4.3m in 47°51'·72N 3°55'·37W & extend 5m contour to enclose. Delete depth 7.2 close W

foul sym in 47°52'·14N 3°54'·78W

*Obstr* depth 1.9m in 47°52'·42N 3°54'·68W

Replace depth 2.2m with depth 0.7m in 47°52'·02N 3°54'·86W (ILNW 38/22)

**37 Tidal Streams – Direction and Rates (Inside chart cover) (certain copies)**

Amend titles of all tidal stream diagrams to refer to HW Brest. Data within diagrams refers to HW Brest. (ILNW 355/22)

**38 Le Dragon & Approaches to Port Manec'h (Main chart & Plan C)**

Insert dangerous wk sym in:

47°48'·01N 3°53'·45W (Main chart)

47°46'·89N 3°43'·59W (Main chart & Plan C) (ILNW 419/22)

**39 Los Loriots & Basse Blanche**

Insert depth 0.9m in 47°44'·37N 3°30'·56W

Replace depth:

0.1m with rock which covers & uncovers sym. enc. by dangerline plus assoc. drying height -0.6m in 47°43'·86N 3°30'·62W

5.0m with depth 4.2m in 47°13'·16N 3°29'·96W

4.5m with depth 3.0m in 47°43'·20N 3°29'·73W (ILNW 52/23)

**40 Port Tudy (Plan I)**

Replace depth 2.2m with depth 1.3m in 47°38'·66N 3°28'·77W (ILNW 53/23)

**41 Lorient (Plan G)**

Delete Lt VQ(3)2M in 47°43'·59N 3°22'·22W (ILNW 54/23)

**42 Approaches to Port la Forêt**

Delete lgd *Mooring Buoys* centred on 47°52'·58N 3°58'·56W (ILNW 315/23)

**43 Approaches to Lorient SE**

Insert R con buoy in:

47°40'·25N 3°16'·09W plus lgd *Target (occas)*

47°40'·18N 3°16'·22W (ILNW 63/24)

**44 Quiberon SE**

Insert rock which covers/uncovers enc. by dangerline and assoc drying height (-0.2m) in 47°27'·69N 3°05'·82W.

Delete depth 6.4m in 47°27'·50N 3°03'·56W (ILNW 64/24)

**45 Port Manec'h (Plan C)**

Replace depth 2.8m with depth 1.7m in 47°48'·02N 3°43'·44W (ILNW 76/24)

**46 Port Tudy (Plan I)**

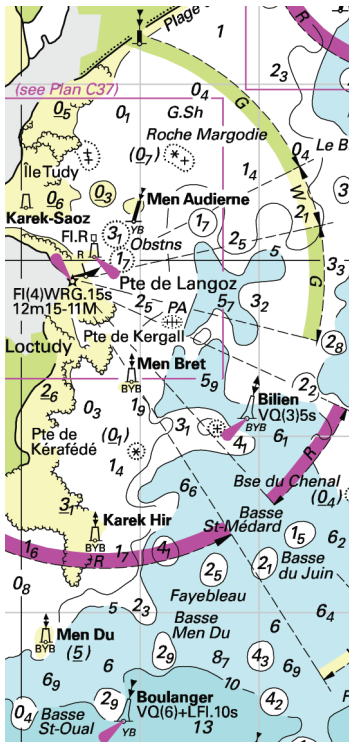
Insert rock awash sym. in 47°38'·82N 3°26'·26W. Delete depth 2.8m close N. Extend dangerline N to include inserted rock awash

Insert depth 3.3m in 47°38'·82N 3°26'·31W (ILNW 77/24)

**47 Approaches to L'Orient (Main chart & Plan G)**

Replace lgd *Intense* with lgd Q.W centred on 47°40'·41N 3°24'·96W (main chart)

Replace lgd *Les Sœurs W. intens* with lgd *Les Sœurs Q. W* centred on 47°41'·09N 3°23'·70W (Plan G) (ILNW 78/24)



Block correction C38  
ILNW 354/17