

# Imray Correction Notice ICC32-3

20 September 2024

## Chart **C32** WGS 84

*Edition 2017*

*Versions available:*

*New Edition (corrected to September 2017)*

*Update (corrected to September 2018)*

*Update (corrected to September 2019)*

*Update (corrected to February 2021)*

*Update (corrected to February 2022)*

*Update (corrected to February 2024)*

### NOTES

*Below is a complete list of corrections issued since the 2017 edition of this chart was published.*

*Each correction is issued with an ILNW reference number and year.*

*Corrections are listed chronologically in ascending order.*

*For Update versions of this chart, please check the bottom left corner of the chart to determine the last applied correction.*

*Any further corrections will be applicable from that point onwards.*

#### 1 **St-Vaast-la-Hougue NW**

Insert drying wreck sym. in 49°36'·02N 1°14'·66W (ILNW 708/17)

#### 2 **Baie du Grand Vey (Main chart & Plan J)**

Insert *Wk* depth 1·8m in 49°24'·95N 1°07'·90W (ILNW 122/18)

#### 3 **Cap Levi (correction superseded see ILNW 626/18)**

Insert racon sym. plus assoc. lgd AIS at **LIGHTHOUSE** FI.R.5s36m17M in 49°41'·75N 1°28'·39W (ILNW 154/18)

#### 4 **Cherbourg (Main chart & Plan M) (correction superseded see ILNW 626/18)**

Insert racon sym and lgd AIS at Lt FI(3)WR.15s19m24/20M in 49°40'·44N 1°38'·80W (ILNW 186/18)

#### 5 **Le Havre (Main chart & Plan A)**

Delete fog signal Horn(1)15s at Lt in 49°29'·20N 0°05'·44E (ILNW 187/18)

#### 6 **Cap de la Hague (correction superseded see ILNW 626/18)**

Insert racon sym and lgd AIS at Lt **Gros du Raz** FI.5s48m23M in 49°43'·31N 1°57'·27W (ILNW 192/18)

#### 7 **Pointe de Barfleur (correction superseded see ILNW 626/18)**

Insert racon sym. plus assoc. lgd AIS at **LIGHTHOUSE** FI(2)10s72m25M in 49°41'·8N 1°16'·00W (ILNW 242/18)

#### 8 **Barfleur (Plan L)**

Amend Lt Oc.R.4s5m6M to FI.R.4s5m6M in 49°40'·32N 1°15'·46W (ILNW 421/18)

#### 9 **Port du Havre Antifer NW**

Move R port pillar Lt buoy **A24** Q.R in 49°40'·12N 0°05'·85E to 49°40'·20N 0°05'·70E (ILNW 422/18)

#### 10 **Ouistreham (Plan E)**

Delete Y special spher. buoy *Wave recorder* in 49°18'·47N 0°14'·52W (ILNW 423/18)

#### 11 **Dives-sur-Mer (Plan D)**

Replace G starboard con Lt buoy FI.G with G starboard Lt Bn FI.G in 49°17'·72N 0°05'·51W (ILNW 424/18)

#### 12 **Saint-Vaast-La-Hougue (Plan K)**

Amend Lt desc. at Y can buoy **SNSM** to FI.Or in 49°34'·59N 1°15'·23W (ILNW 425/18)

### 13 Saint-Vaast-La-Hougue (Plan K)

Depths less than charted exist around La Dent, Le Gavendest, Grosse Roche and Le Manquet.

Insert depth 0.2m in 49°34'·85N 1°13'·93W. Delete depth 1.9m close SW.

Insert YB S cardinal con buoy **La Dent** in 49°34'·56N 1°14'·18W. Delete YB S cardinal spar buoy **La Dent** close NW.

Move BYB E cardinal spar buoy **Le Manquet** in 49°34'·26N 1°15'·57W to 49°34'·25N 1°15'·53W

Yachtsmen are advised to navigate with caution in the vicinity. (ILNW 426/18)

### 14 Barfleur (Plan L)

Insert G Bn **La Corbière** in 49°40'·41N 1°15'·38W

Insert rock awash sym. in:

49°40'·54N 1°15'·70W

49°40'·58N 1°15'·35W

49°40'·47N 1°14'·93W

49°40'·34N 1°15'·01W. Delete depth 0.2m close SW

Replace drying height -0.9m with drying height -1.6m in 49°40'·31N 1°15'·50W (ILNW 427/18)

### 15 Baie de Seine

Insert label *Measuring Instruments (see Note)* centred on:

49°28'·68N 0°14'·30W

49°24'·23N 0°27'·53W

Between 15 March and 15 November fishing, dredging, trawling, and anchoring are prohibited in these areas. (ILNW 530/18)

### 16 Automatic Identification Systems (Main chart & Plan M)

Delete racon sym & assoc. lgd AIS at Lt:

**Gros du Raz** Fl.5s48m23M in 49°43'·31N 1°57'·27W (Main chart)

Fl(3)WR.15s19m24/20M in 49°40'·44N 1°38'·80W (Main chart & Plan M)

**LIGHTHOUSE** Fl.R.5s36m17M in 49°41'·75N 1°28'·39W (Main chart)

**LIGHTHOUSE** Fl(2)10s72m25M in 49°41'·8N 1°16'·00W (Main chart)

(ILNW 626/18)

### 17 Baie du Grand Vey (Plan J)

Move G starboard con buoy **No1** Fl.G.2.5s in 49°23'·91N 1°08'·45W to 49°24'·29N 1°08'·57W (ILNW 670/18)

### 18 Baie du Grand Vey (Plan J)

Amend Lt desc at buoy:

**No1** Fl.G.2.5s to Fl.G.4s in 49°24'·29N 1°08'·57W

**No2** Fl.R.2.5s to Fl.R.4s in 49°23'·87N 1°08'·33W (ILNW 701/18)

### 19 Cap D'Antifer

Insert Y special spar Lt buoy:

**H1** Fl(5)Y.20s in 49°38'·03N 0°00'·09W

**H2** Fl(5)Y.20s in 49°51'·89N 0°14'·28E

**C3** Fl(5)Y.20s in 49°51'·40N 0°14'·21E (ILNW 287/19)

### 20 Basse Bréfort

Move BY N cardinal pillar Lt buoy **Basse Bréfort** VQ in 49°43'·70N 1°51'·18W to 49°43'·93N 1°51'·18W (ILNW 442/19)

### 21 Pointe du Hoc E

A marine reserve has been established to the E of Pointe du Hoc, the limits of which can be defined as follows:

49°23'·88N 0°59'·36W (shore)

49°24'·07N 0°59'·37W

49°23'·97N 0°58'·03W

49°23'·81N 0°58'·04W (shore)

Entry into this reserve is prohibited. (ILNW 506/19)

### 22 Banc du Cardonnet

Insert dangerous wreck sym, plus assoc. lgd *PD* in 49°27'·07N 1°04'·27W (ILNW 507/19)

### 23 Honfleur (Plan B)

Add range of Lt 6M at Lt Q.G.10m in 49°25'·68N 0°13'·81E (ILNW 508/19)

### 24 Honfleur (Plan B)

Move R port pillar Lt buoy **No 20** Fl(2)R.6s in 49°25'·86N 0°13'·70E to 49°25'·85N 0°13'·53E (ILNW 509/19)

**25 Le Havre**

Amend Lt:

Fl.R.5s to Fl.R.4s8M in 49°29'·20N 0°05'·44E

VQ(3)G.11M to Fl.G.4s8M in 49°29'·06N 0°05'·38E (ILNW 630/19)

**26 Le Havre Yacht Harbour (Plan A)**

Amend Lt:

Fl.R.5s15m21M to Fl.R.4s15m8M in 49°29'·20N 0°05'·44E

VQ(3)G.2s15m11M to Fl.G.4s15m8M in 49°29'·06N 0°05'·38E (ILNW 630/19)

**27 Approaches to Cherbourg (Plan M)**

Insert depth 2.6m in 49°40'·57N 1°35'·32W (ILNW 373/20)

**28 Pte de Saire**

Amend Lt from Oc(2+1)10M to Iso.4s11m10M in 49°36'·37N 1°13'·78W (ILNW 621/20)

**29 Cap d'Antifer N (correction amended see ILNW 477/22 & 30/23)**

Delete Y spec spar Lt buoy:

**H2** in 49°51'·89N 0°14'·28E

**C3** in 49°51'·40N 0°14'·21E

Insert Y spec spar Lt buoy **C3** Fl(5)Or.20s (*occas*) in 49°51'·34N 0°14'·04E (ILNW 37/21)

**30 Courseulles-sur-Mer (Plan F)**

Insert accompanying block correction centred on 49°20'·80N 0°27'·49W (ILNW 38/21)

**31 Baie de Seine**

Insert limit of restricted area, joining:

49°22'·73N 0°09'·79W

49°22'·22N 0°09'·69W

49°22'·19N 0°10'·01W

49°22'·71N 0°10'·11W

Add assoc. legend *Measuring Instruments (seasonal)*.

Fishing, dredging, trawling and anchoring are prohibited in this area from March to November. (ILNW 186/21)

**32 Cap d'Antifer NE**

Replace fish haven sym. with circular dangerline & assoc. legend *Obstns* centred on 49°43'·95N 0°11'·65E (ILNW 187/21)

**33 Cherbourg (Main chart)**

Replace sym. water tower (194) with Lt Q.194m20M in 49°37'·04N 1°36'·01W

Insert Lt Q.158m20M in 49°37'·49N 1°35'·97W

Move Lt stars LdgDirQ.13M in:

49°39'·06N 1°36'·03W to 49°39'·13N 1°35'·74W

49°39'·34N 1°35'·96W to 49°39'·26N 1°36'·09W

Plus amend Lt desc. to 2LdgQ.19M

Delete assoc. ldg line plus lgd Ldg Lts 189° extending from 49°39'·06N 1°36'·03W (ILNW 402/21)

**34 Cherbourg (Plan M)**

Insert Lt:

Q.26m19M in 49°39'·13N 1°35'·74W

Q.26m19M in 49°39'·26N 1°36'·09W

Amend Lt desc at Fort des Flamands DirIso.G.10M&DirQ.16m13M to Q.16m13M in 49°39'·06N 1°36'·01W

Delete Lt DirQ.9m13M in 49°39'·33N 1°35'·94W

Insert ldg line extending in direction 299° from 49°39'·13N 1°35'·74W to intersect with Ldg line 140° & add assoc. lgd 119°

Delete ldg lines extending in directions 304° (lgd Ldg Lts 124°) & 009° (lgd Ldg Lts Q. 189°) from 49°39'·06N 1°36'·01W (ILNW 402/21)

**35 Approaches to Grandcamp-Miasy (Plan J)**

Replace drying height:

-0.6m with -1.6m in 49°24'·14N 1°02'·66W

-1.1m with -1.9m in 49°23'·75N 1°01'·75W (ILNW 575/21)

**36 Ouistreham (Main chart & Plan E)**

**Main chart**

Amend Lt DirOc(3+1)R.12s17M to 2DirOc(3)R.12s17M in 49°17'·10N 0°14'·79W

**Plan E**

Amend Lt:

DirOc(3+1)R.12s11m17M to DirOc(3)R.12s11m17M in 49°17'·10N 0°14'·79W

DirOc(3+1)R.12s30m17M to DirOc(3)R.12s30m18M in 49°16'·78N 0°14'·83W (ILNW 582/21)

**37 Approaches to Courseulles-sur-Mer (Main chart & Plan F)**

Insert rock sym which covers and uncovers in:

49°21'·12N 0°26'·41W (Main chart & Plan F)

49°21'·53N 0°23'·62W (Main chart)

49°21'·60N 0°23'·30W (Main chart) (ILNW 4/22)

**38 Grandcamp-Maisy (Plan I)**

Insert drying height:

-4·2m in 49°23'·49N 1°02'·91W

-5m in 49°23'·44N 1°02'·82W

-5·8m in 49°23'·39N 1°02'·81W. Delete drying height -4m close W (ILNW 25/22)

**39 Approaches to Saint-Vaast-la-Hogue, Morsalines**

Amend sectors at Lt Oc(4)WRG.12s90m11-8M in 49°34'·17N 1°19'·06W to 195° - W - 298° - G - 314° - W - 319° - R - 331° (ILNW 26/22)

**40 Courseulles-sur-Mer NW**

Insert Y special can Lt buoy FI(5)Y.20s in:

49°27'·71N 0°29'·21W

49°29'·20N 0°35'·73W

Delete Y pillar Lt buoy ODAS FI(5)Y.20s in 49°29'·57N 0°33'·37W (ILNW 27/22)

**41 Direction and Rate of Tidal Streams**

Insert accompanying block correction replacing the table of tidal streams based on Le Havre. Data refers to LW (ILNW 314/22)

**42 Cap d'Antifer N (correction amended see ILNW 538/22)**

Insert Y special purpose can Lt buoy ODAS FI(5)Y.20s in 49°51'·00N 0°15'·72E (ILNW 330/22)

**43 Cap d'Antifer N**

Insert restricted area joining:

49°54'·95N 0°16'·91E (edge of chart)

49°50'·20N 0°15'·11E

49°50'·19N 0°08'·25E

49°55'·94N 0°12'·62E

Add assoc lgd *Wind Farm under construction* (ILNW 341/22)

**44 Courseulles-sur-Mer NW**

Construction works are underway on the Calvados Wind Farm. Insert limit of restricted area joining:

49°31'·30N 0°38'·90W

49°31'·40N 0°35'·60W

49°29'·50N 0°32'·80W

49°29'·40N 0°29'·80W

49°28'·70N 0°27'·20W

49°25'·40N 0°24'·40W

49°26'·20N 0°32'·30W

Add assoc lgd *Calvados Wind Farm under construction*

Insert circular limit of restricted area, radius 200m, centred on 49°25'·77N 0°23'·84W plus assoc lgd *Diving prohibited* (ILNW 368/22)

**45 Embouchure de la Seine**

Insert Y special Lt superbuoy FI(5)Y.20s in 49°28'·84N 0°01'·93E (ILNW 391/22)

**46 Cherbourg (Plan M)**

Delete light Q.16m13M in 49°39'·06N 1°36'·01W (ILNW 471/22)

**47 Fécamp NW (correction amended see ILNW 7/24)**

Insert Y spec purpose spar Lt buoy **C1** FI(5)Or.20s (occas) in 49°54'·85N 0°15'·21E

Move Y spec purpose spar Lt buoy **C3** from 49°51'·34N 0°14'·04E to 49°50'·59N 0°14'·30E (ILNW 477/22)

**48 Fécamp NW**

Move Y special purpose can Lt buoy ODAS FI(5)Y.20s from 49°51'·00N 0°15'·72E to 49°50'·88N 0°15'·19E (ILNW 538/22)

**49 Port du Havre-Antifer**

Delete Lt Fl.Vi.5M in:

49°40'·21N 0°07'·47E

49°40'·21N 0°08'·23E (ILNW 31/23)

**50 Baie du Grand Vey (Main chart & Plan J)**

Insert dangerous wk centred on 49°27'·17N 1°10'·80W (Main chart)

Insert entry prohibited restricted area joining:

49°24'·51N 1°10'·11W

49°24'·57N 1°09'·45W

49°24'·29N 1°08'·57W

49°23'·58N 1°08'·70W

49°22'·24N 1°09'·36W

49°22'·13N 1°09'·64W

49°22'·57N 1°10'·42W

49°22'·72N 1°10'·45W

Add assoc lgd *Nature Reserve (Entry Prohibited)* (Main chart & Plan J)

**Saint-Floxel** BYB W cardinal spar buoy is now lit. Add Lt desc VQ(3)5s in 49°30'·65N 1°13'·90W (Main chart) (ILNW 167/23)

**51 Ouistreham (Plan E)**

Insert an entry prohibited restricted area joining:

49°17'·01N 0°14'·14W (R bn)

49°17'·18N 0°14'·18W

49°17'·15N 0°13'·88W

49°16'·92N 0°13'·90W (R bn)

Add assoc lgd (*buoyed*) (ILNW 223/23)

**52 Le Parfond**

Delete Y con Lt buoy:

**MO2** VQ in 49°27'·49N 0°11'·79W

**MO3** VQ in 49°27'·37N 0°15'·95W (ILNW 303/23)

**53 Saint-Vast-la-Hougue S**

Insert drying rock sym in 49°33'·87N 1°17'·09W. Delete depth 1·3m close E (ILNW 370/23)

**54 Approaches to Le Havre**

Delete Y con Lt buoy VQ:

**MO1** in 49°27'·56N 0°09'·27W

**MO4** in 49°26'·32N 0°06'·45W

**MO5** in 49°22'·01N 0°06'·17W (ILNW 378/23)

**55 Cap d'Antifer N**

Delete Y special purpose Lt spar buoy:

**C1** Fl(5)Or.20s (occas) in 49°54'·85N 0°15'·21E

**C3** Fl(5)Or.20s (occas) in 49°50'·59N 0°14'·30E (ILNW 7/24)

**56 Ouistreham (Plan E)**

Replace R bn with Y special purpose bn in:

49°17'·01N 0°14'·13W

49°16'·92N 0°13'·90W

Delete R bn in 49°17'·10N 0°14'·42W (ILNW 73/24)

**57 Barfleur (Plan L)**

Insert lit mooring buoy sym. Fl.Y.4s in 49°40'·50N 1°15'·68W (ILNW 83/24)

**58 Approaches to Le Havre**

Delete Y spher Lt buoy Fl(5)Y.20s in 49°28'·55N 0°00'·91W (ILNW 84/24)

**59 Dives-sur-Mer (Plan D)**

Delete Y Bn in 49°17'·80N 0°05'·24W (ILNW 85/24)

**60 Banc du Cardonnet**

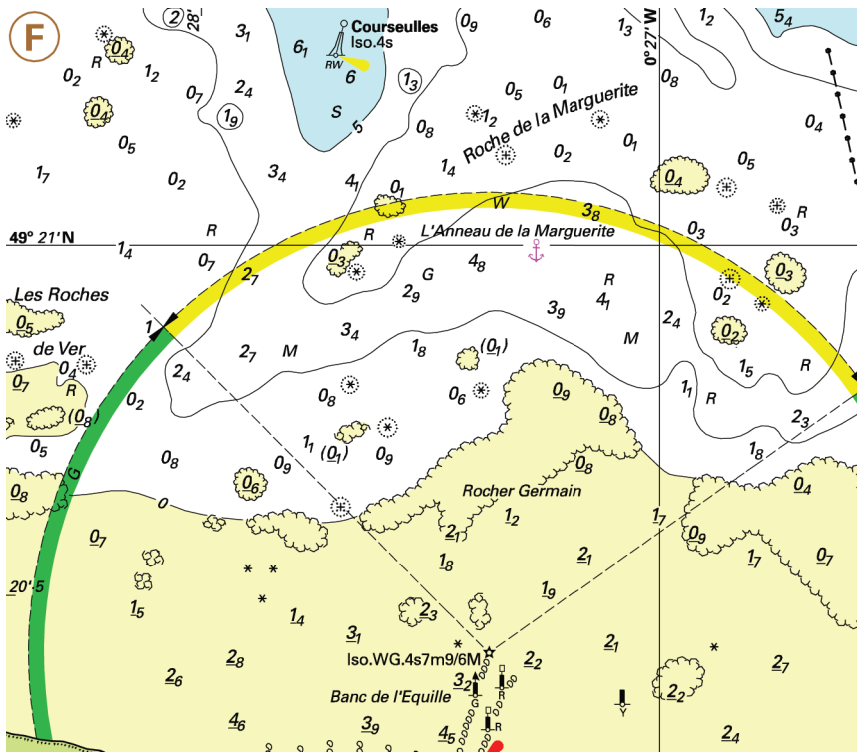
Insert *Obstn* symbol in 49°28'·00N 1°06'·32W (ILNW 287/24)

**61 Port-en-Bessin**

Amend range of Lt 2Oc(3)11&10M to 14&10M in 49°20'·97N 0°45'·52W (ILNW 329/24)

**62 Port-en-Bessin (Plan H)**

Amend range of Lt Oc(3)12s42m11M to 14M in 49°20'·92N 0°45'·57W (ILNW 329/24)



Block correction for C32 (Plan F)  
ILNW 38/21

**APPROXIMATE DIRECTION AND RATE OF TIDAL STREAMS**  
Based upon Low Water at LE HAVRE

<b>N</b>	49°37'.8N	Hours before LW							Hours after LW					
	0°11'.0W	6	5	4	3	2	1	LW	1	2	3	4	5	6
	Direction°	061	285	276	272	261	246	249	160	120	096	092	091	084
	Rate in Springs	0.2	0.6	1.2	1.6	1.6	1.5	0.7	0.8	1.6	1.8	1.7	1.2	0.5
	Knots Neaps	0.5	0.1	0.4	0.7	0.9	0.9	0.9	0.4	0.4	0.9	1.1	1.0	0.7

<b>O</b>	49°23'.0N	Hours before LW							Hours after LW					
	0°05'.0W	6	5	4	3	2	1	LW	1	2	3	4	5	6
	Direction°	268	284	287	285	284	281	216	119	109	095	083	084	-
	Rate in Springs	0.2	0.5	0.8	0.8	0.6	0.5	0.1	0.7	1.1	0.8	0.6	0.3	0.0
	Knots Neaps	0.1	0.3	0.4	0.5	0.4	0.3	0.2	0.2	0.4	0.6	0.5	0.2	0.0

<b>P</b>	49°29'.3N	Hours before LW							Hours after LW					
	0°03'.4W	6	5	4	3	2	1	LW	1	2	3	4	5	6
	Direction°	185	272	300	297	292	275	225	144	111	079	063	076	132
	Rate in Springs	0.2	0.3	0.6	0.8	0.8	0.7	0.5	0.7	0.9	0.8	0.8	0.5	0.2
	Knots Neaps	0.1	0.1	0.2	0.3	0.3	0.3	0.3	0.2	0.2	0.3	0.5	0.4	0.2

<b>Q</b>	49°34'.0N	Hours before LW							Hours after LW					
	0°01'.0W	6	5	4	3	2	1	LW	1	2	3	4	5	6
	Direction°	045	294	244	231	230	228	216	191	057	038	043	052	055
	Rate in Springs	0.2	0.2	0.5	0.8	1.0	1.0	0.8	0.5	0.4	1.3	1.5	1.0	0.4
	Knots Neaps	0.5	0.3	0.2	0.3	0.4	0.6	0.6	0.5	0.3	0.3	0.5	0.6	0.6

Block correction for C32 Tidal streams  
ILNW 314/22