

# Imray Correction Notice ICM45-2

26 February 2025

## Chart M45 WGS 84

*Edition 2015*

*Versions available:*

*New Edition (corrected to August 2015)*

*Update (corrected to June 2017)*

*Update (corrected to June 2018)*

*Update (corrected to June 2019)*

*Update (corrected to April 2021)*

*Update (corrected to April 2022)*

*Update (corrected to April 2023)*

*Update (corrected to March 2024)*

### NOTES

*Below is a complete list of corrections issued since the 2015 edition of this chart was published.*

*Each correction is issued with an ILNW reference number and year.*

*Corrections are listed chronologically in ascending order.*

*For Update versions of this chart, please check the bottom left corner of the chart to determine the last applied correction.*

*Any further corrections will be applicable from that point onwards.*

#### 1 **Porto Santo Stefano (Plan E)**

Works are now complete at porto del Valle.

Delete lgd *Under construction (2014)* centred on 42°26'·38N 11°07'·55E (ILNW 498/15)

#### 2 **Corsica Channel TSS**

A new traffic separation scheme (TSS) is to be implemented on 1st December 2016 in the Corsica Channel between Cap Corse and Isola Capraia.

Charts will be updated when the TSS is implemented. (ILNW 487/16)

#### 3 **Torre de Sale**

Insert Lt Fl.R.3s3M & Fl.G.3s3M in 42°57'·21N 10°37'·03E (ILNW 528/16)

#### 4 **In the Corsica Channel Traffic Separation Scheme**

A Traffic Separation Scheme (TSS) was implemented in the Corsican Channel on 1st December 2016.

Yachtsmen are reminded that when within the traffic lanes shown on this chart they should proceed in the general direction indicated by the arrows or, if crossing a lane, they should do so as nearly as practicable at right angles to it.

Insert accompanying block correction centred on 42°58'·00N 9°31'·16E (ILNW 569/16)

#### 5 **Portovecchio di Piombino**

Insert Lt Fl.G.3s12m8M in 42°56'·24N 10°33'·53E

Delete Lt Fl.R.5s10m8M in 42°55'·84N 10°33'·31E (ILNW 646/17)

#### 6 **Scog. Africa**

Amend range of Lt Fl.5s19m12M to 7M in 42°21'·5N 10°03'·9E (ILNW 671/18)

#### 7 **Isola del Giglio (correction superseded see ILNW 222/19)**

Amend range of Lt Fl(4)30s90m23M to 7M in 42°19'·3N 10°55'·2E. AIS remains unchanged (ILNW 55/19)

#### 8 **Approaches to Porto S. Stefano (Plan E)**

Amend Lt Molo Sanità 2F.G(vert)7m3M to F.G.7m3M in 42°26'·52N 11°06'·97E (ILNW 56/19)

#### 9 **Marina di San Rocco NW**

Insert dangerous wreck sym in 42°43'·97N 10°56'·39E (ILNW 221/19)

#### 10 **Isola del Giglio**

Amend range of Lt Fl(4)30s90m7M to 23M in 42°19'·3N 10°55'·2E. AIS remains unchanged (ILNW 222/19)

**11 Portovecchio di Piombino**

Insert Lt F.I.R.3s12m8M in 42°55'·96N 10°33'·66E. (ILNW 223/19)

**12 Talamone (Plan D)**

Move Lt F.R.3M in 42°33'·26N 11°08'·12E to 42°33'·28N 11°08'·25E (ILNW 416/19)

**13 Bastia (Plan C)**

Insert Lt FI(2)G.6s in 42°42'·01N 9°27'·34E (ILNW 624/20)

**14 Golfo di Follonica**

Insert Entry Prohibited area joining:

42°53'·40N 10°39'·53E

42°53'·40N 10°37'·80E

42°55'·40N 10°37'·80E

42°55'·40N 10°39'·53E (ILNW 324/21)

**15 Golfo di Follonica**

Delete restricted area centred on 42°54'·1N 10°44'·3E (ILNW 105/22)

**16 Corse, Îles Finocchiarola**

A marine reserve has been established around the Îles Finocchiarola in the vicinity of 42°59'·05N 9°27'·90E. Insert assoc. Igd *Marine Reserve* (ILNW 106/22)

**17 Bastia (Main Chart & Plan C)**

Replace Lt FI.WR.4s16m15/12M with Lt Q.R.16m14M in 42°41'·66N 9°27'·24E. Amend W Lt sectors to R.

**Plan C**

Amend Lt desc. Môle Génois FI(2)G.6s13m4M to FI(3)G.12s13m5M in 42°41'·69N 9°27'·18E (ILNW 107/22)

**18 Corse, Capo Sagro**

Amend range of Lt FI(3)12s10M to 12M in 42°47'·77N 9°29'·58E (ILNW 108/22)

**19 Corsica**

Anchoring and stopping by dynamic positioning for vessels equal to or greater than 24m in length is prohibited along the coast of Corsica. Contact the local authorities for further information. (ILNW 265/22)

**20 Isola d'Elba, Rio Marina**

Delete Lt Iso.2s10m5M in 42°49'·21N 10°25'·89E (ILNW 80/23)

**21 Corsica, Camp du Cap Sud**

Insert limit of seaplane operating area joining:

42°34'·00N 9°31'·61E (Pta di Arcu)

42°34'·00N 9°36'·00E

42°27'·75N 9°36'·00E

42°27'·75N 9°32'·36E (Pta di San Pellegrinu) (ILNW 81/23)

**22 Bastia (Main chart & Plan C)**

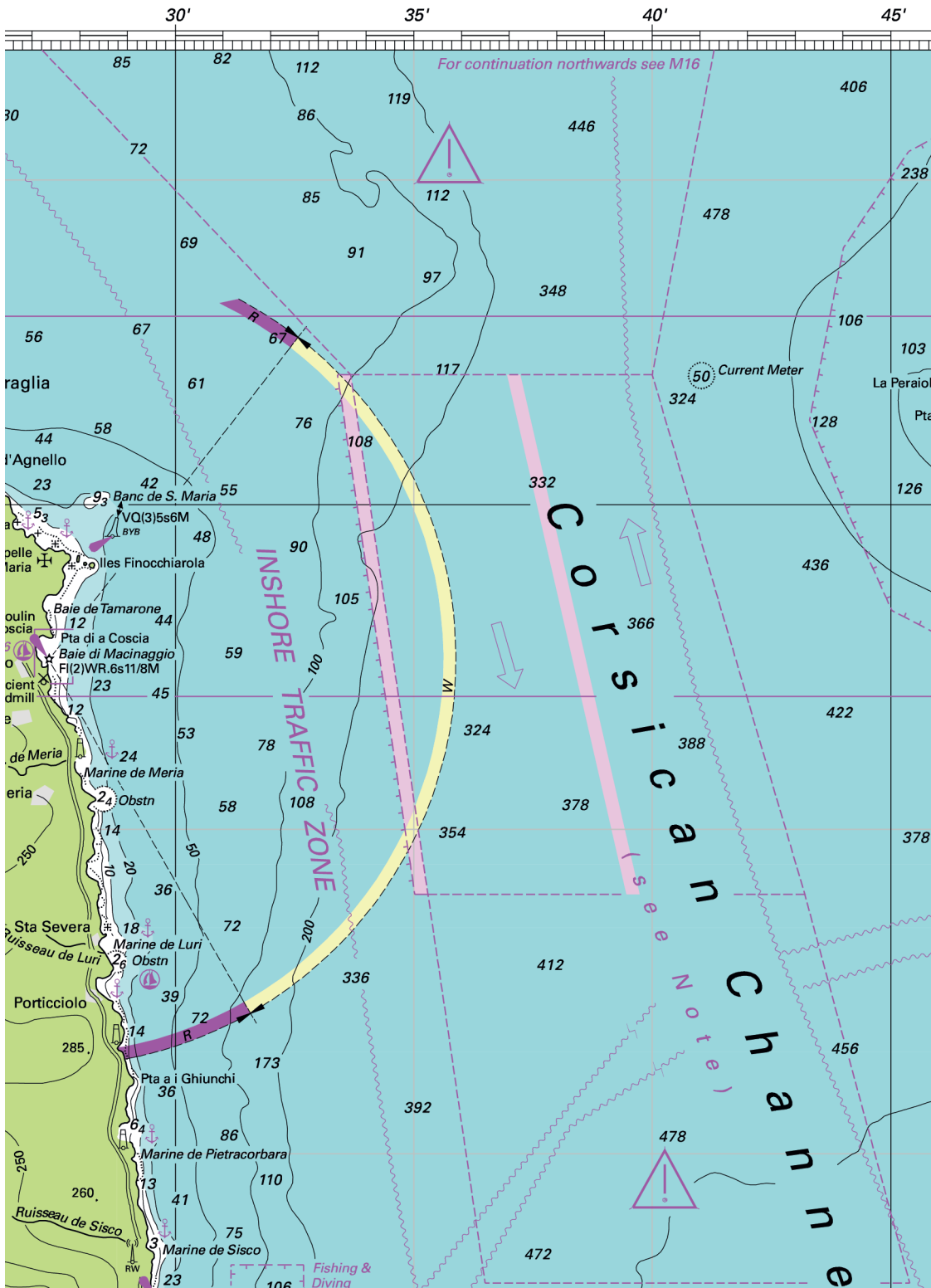
Amend Lt FI.G.4s9m11M to Q.G.9m11M in 42°41'·89N 9°27'·35E (ILNW 342/23)

**23 Î. de la Giraglia, Corse N**

Amend range of Lt from FI.5s85m28M to 15M in 43°01'·68N 9°24'·38E (ILNW 123/24)

**24 Canale di Piombino**

Insert explosives dumping ground sym in 42°54'·21N 10°25'·25E (ILNW 35/25)



Block correction for M45  
ILNW 569/16