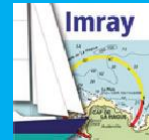




Imray Navigator



Quick



www.imray.com

support@imray.co

Imray Navigator (Android)

Access your charts across your Android and Apple devices

Use Imray Navigator for quick reference or to convert your device into a simple chart plotter.

Get access to an entire library of Chart Sets including Imray's award-winning raster charts and those of other official Hydrographic Offices.

Get quarterly updates with the latest data during the

Zoom and pan to navigate around charts, with easy access to different levels of detail.

Create and share a personal collection of waypoints and routes.

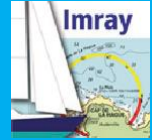
Use chart indicators to measure distances and bearings.

–





Imray Navigator



Content

Overview,

Indicator icons, 4
What indicator icons mean

Instruments Panel, 5
**View data showing position,
speed and bearing**

Charts
Buy charts, 6
Download and manage your

Show/Hide
**Turn indicators on or off on the
chart display. 8**

Navigation

**Tracks>Track and Measure
tool, 9 Routes>Add routes, 10**
**Routes>Select and Edit Routes,
11 Waypoints>Add and**

Preferences,

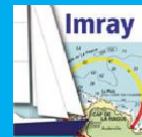
GPS,

**NOT TO BE USED FOR NAVIGATION. USER
UNDERTAKES ALL RESPONSIBILITY.**

Imray Navigator Quick Guide, charts and app
© Imray, Laurie, Norie and Wilson Ltd

See About section in the app for full terms and
conditions. licences etc.





Imray Navigator

Overvie

The app displays charts, corresponding to their paper counterparts, with layers of georeferenced information.

Zoom in and out of the chart to see the image at different scales, carefully selected by our cartographers.

Zoom out for small scale passage charts.

Zoom in for greater detail around harbours, estuaries and coastlines.

Magenta boxes show the edges of each overlapping chart. **skilled**

Tools and toolbars support waypoints, routes, distance measurement, position and destination. Set display options and preferences.

Speed and Bearing

Speed over ground
Course over ground

Routes
Trac
Measure

Cursor
Tap for coordinates
information measure

Order charts

Instruments Panel

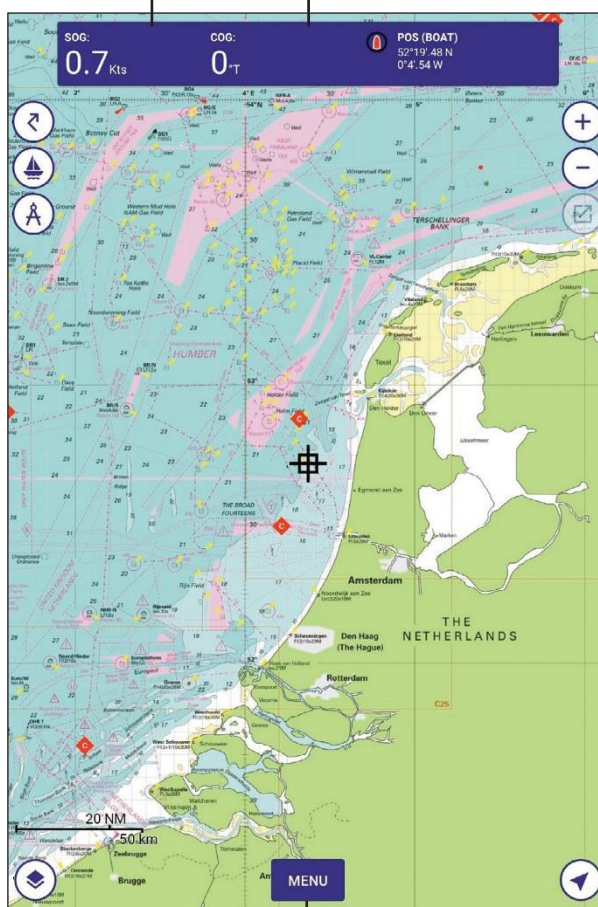
Location coordinates
Distances

Zoom buttons

Chart
Scroll to pan
Pinch or double tap
to zoom

Centre on position

Tap to centre on
current position



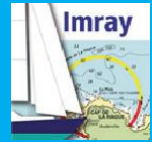
Menu

- click to open main menu*
- Chart store
- My subscriptions Login
- Redeem voucher Overlays
- Routes
- Tracks
- Waypoints
- Chart notes
- About this app





Imray Navigator



Indicator icons

What indicators mean and

Data additional to that on the chart is shown by indicators - colour-coded icons.

Indicators are connected to a georeferenced position (a coordinate).

Touch-drag indicators to move them.

Tap the indicator to access data or trigger an action:

Single tap - information Double



Boat

Shows your GPS position.



Corrections

Imray charts only. Derived from Imray Correction Notices. Updated quarterly. Tap to show corrections to



Cursor

Tap the cursor to see a coordinate.

Use the menu to add waypoints to the chart



Measure tool

Tap end points to see distance and bearing between points A and B. Touch drag to move



Notes

Notes about the chart. Updated quarterly. Tap the points on the chart to see information. Tap the Notes indicator in the bottom right-hand corner for general notes relating to



Route

Use the Routes icon to add, edit, delete and share routes.



Track

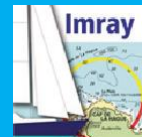
Use the Track icon to capture tracks. Switch on GPS to capture tracks



Waypoint

Mark waypoints. Tap once to reveal coordinates and name. Menu enables you to edit





Imray Navigator

Instruments Panel

View data showing position, speed and

The information shown in the Instruments Panel changes depending on which tools you are currently using.

Speed (SOG) & heading (COG)

(shown as °T and speed unit)

Shown when valid values are received from the device GPS sensor.

Boat position

(shown as coordinates)

Boat GPS location

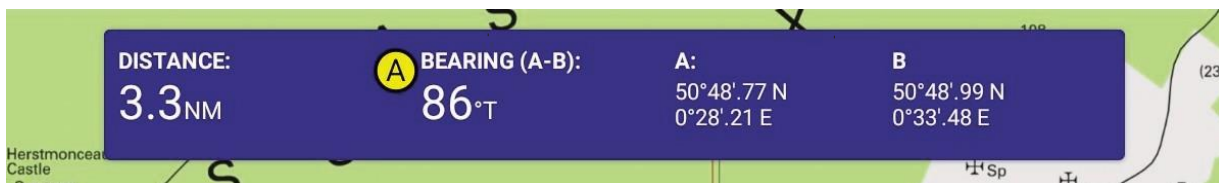


Measure tool view

Distance and Bearing

A to B

Positions of points

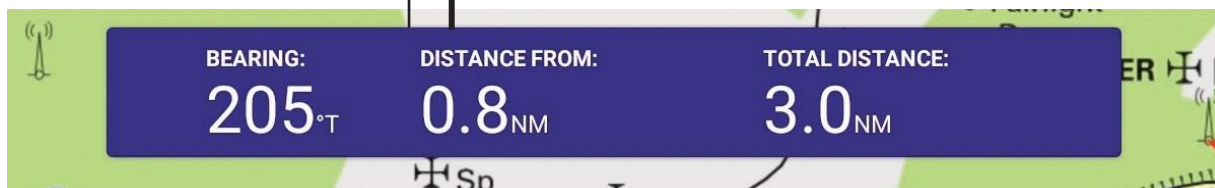


Routes view

Distance and Bearing

to next point

Total route distance



Tracks view

Heading

Distance travelled

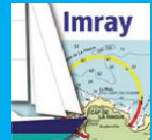
Speed over ground

Trip





Imray Navigator



Charts Buy

Login

Before you can subscribe to a chart set, you need to

Login.

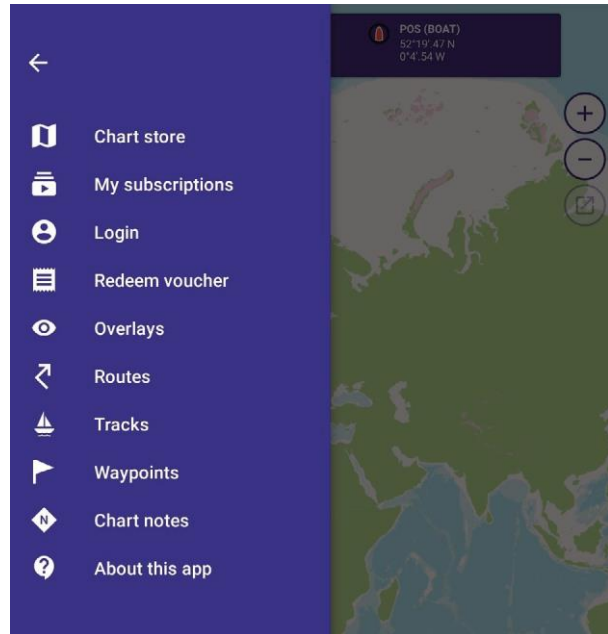
Tap on the menu and tap **Login**. You will be prompted to enter a user name and password. First time users need to set up an account.

Voucher codes

If you have a voucher code from an Imray paper product or our support team, use this to access your 12-month subscription to a Chart Set.

To use the voucher tap on the menu and then tap **Redeem Voucher** and enter the code.

Remember that your subscription will expire after a year and you will no longer receive updates unless you choose to subscribe



Subscriptions

Charts are sold in Chart Sets by geographical area from the **Charts Store** in the app. Tap on themenu.

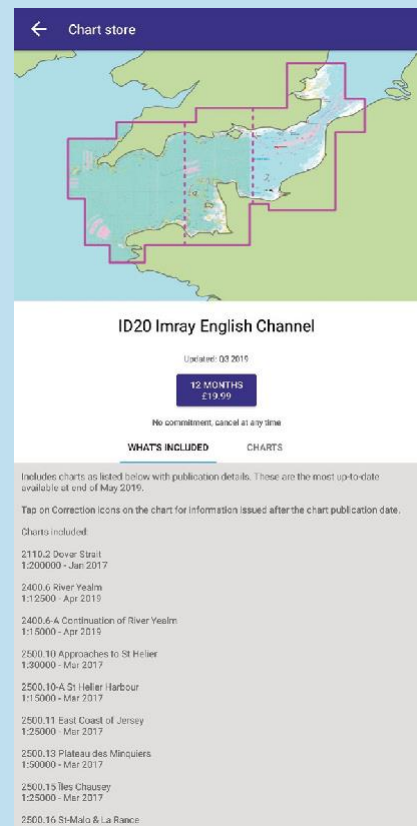
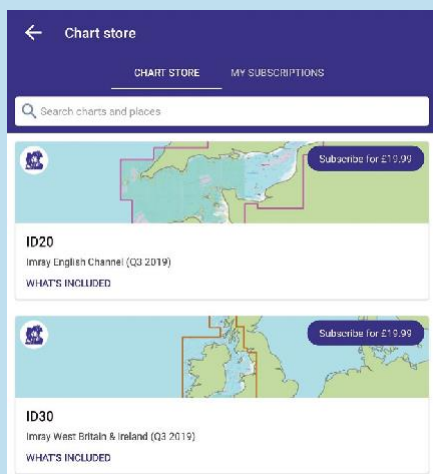
Chart Store

Tap to display a list of available Tap on a Chart Set to view the Chart Sets chart outlines, underlying chart names and edition date.

Tap on the subscription button showing price and duration to subscribe.

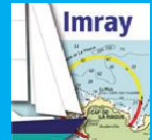
Subscription provides quarterly updates with notes, corrections and new editions.

If notifications are switched on, the app will remind you to resubscribe 15 days before expiry. You can manage your subscription (including cancelling) in the Account Settings of the Google Play Store





Imray Navigator



Charts

Download, update and manage your

- Once you have logged in and subscribed to a Chart Set, you will need good internet access to download it.
- Chart Sets are split into sections to reduce download time, but they are still large files so may take several minutes to download.

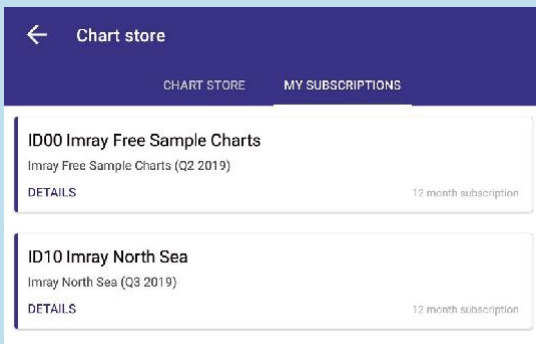
Download

Tap on the Chart Set in the Chart Store. Tap on Charts to download your Chart Set.

Choose which areas of your Chart Set you want to download. Tap to download.

Delete

Tap on **My Subscriptions** and then the Chart Set.



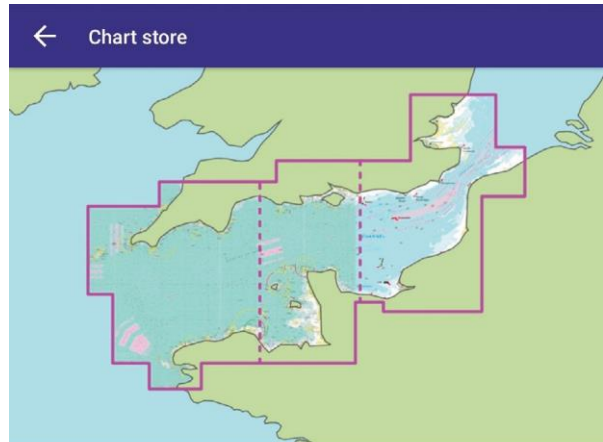
Tap on **Charts** and tap delete to remove sections.



Removing charts from your device can save storage space. You can restore and download it again any time.

My Subscriptions and Updates

Access Chart Sets that you are currently or have previously been subscribed-to. If your subscription has expired, these Chart Sets will not be up to date.



ID20 Imray English Channel

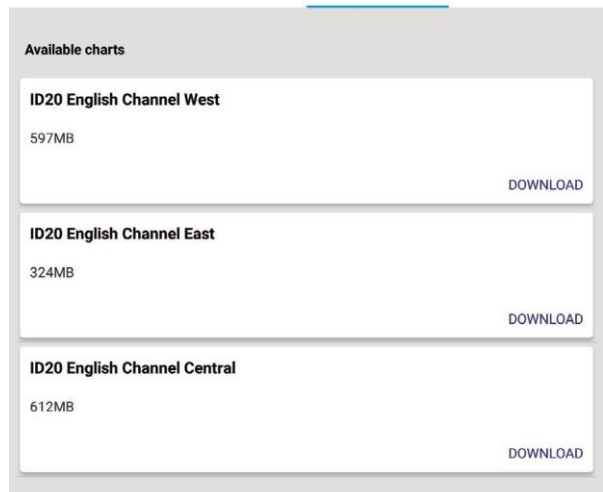
Updated: Q3 2019

12 month subscription, renews Oct 2020

No commitment, cancel at any time

WHAT'S INCLUDED

CHARTS



Restore Purchases

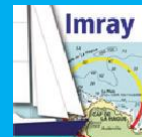
If you login on another device you can restore purchases bought against your account. Go to **My Subscriptions** and tap **Restore Purchases**

You haven't subscribed to any charts.

You can subscribe to charts in the chart store tab or restore purchases by tapping below.

RESTORE PURCHASES



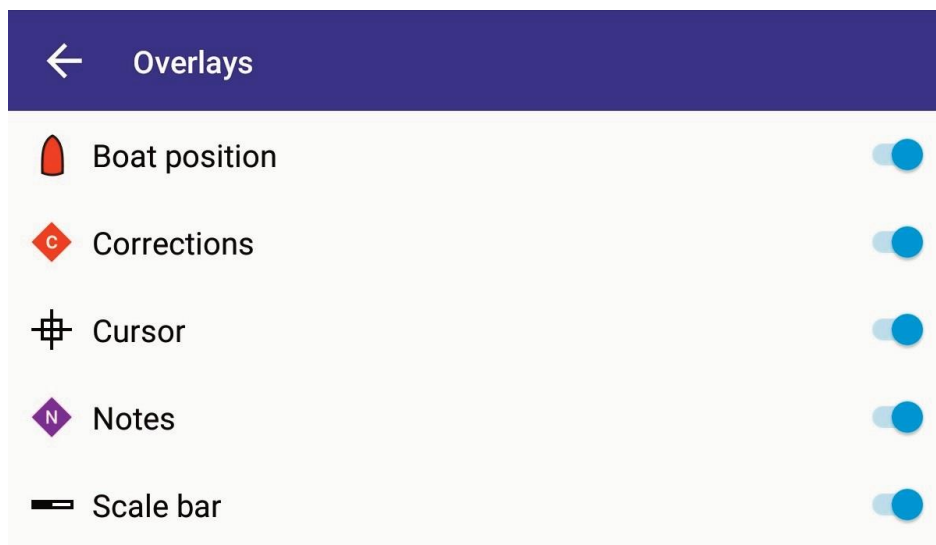


Imray Navigator



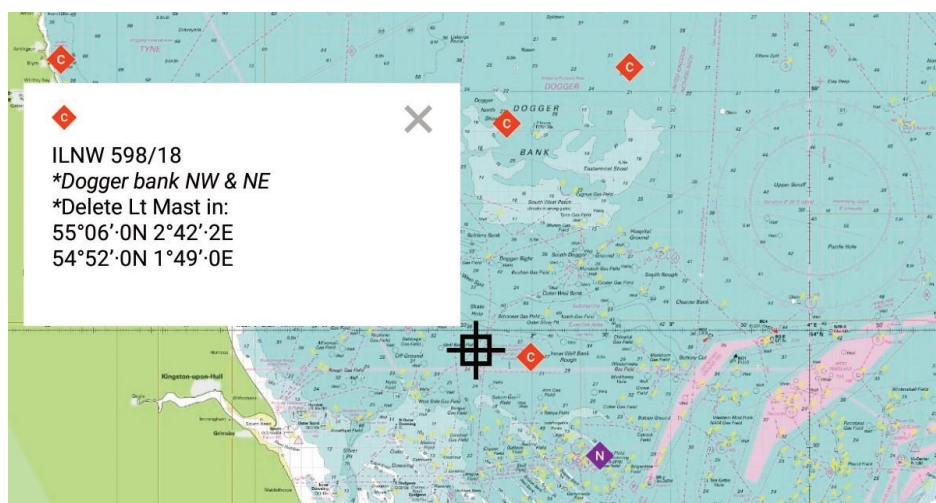
Show/Hide

Turn indicators on or off on the chart

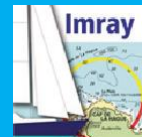


Tap on the **Menu** then tap **Overlays**. Use the toggles to turn overlays on or off.

- Boat Position
- Corrections Cursor
- Notes Scale
- Bar



Tap the indicators to show related information



Imray Navigator

Navigation > Tracks Track and Measure



Track

Capture and save tracks. See basic trip data.



← Tracks



10/10/2019 - 15:38:59

Start: 10/10/2019 - 15:38

End: 10/10/2019 - 16:31

0d 0h 52m 29s

Distance: 22.5NM

Max speed: 63.2Kts

Avg. speed: 25.7Kts

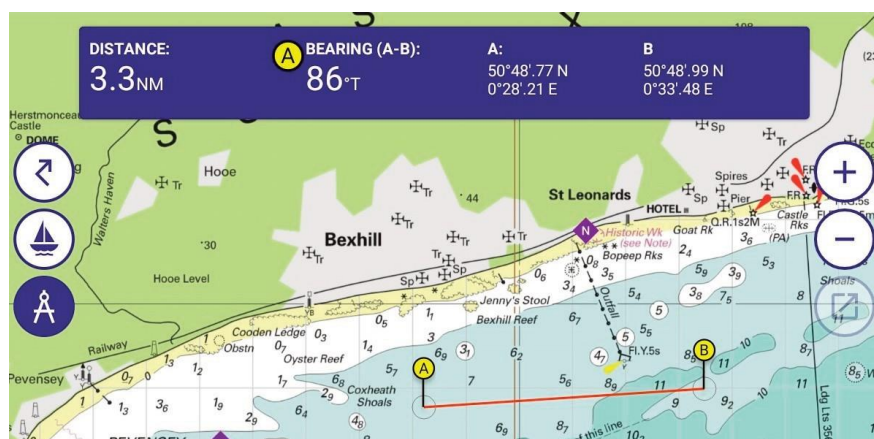
HIDE EDIT DELETE

Capture a Track

- Tap **Tracking** to capture a journey.
- Save track when journey complete. Default name is the date and start time. This can be edited as necessary by typing into the box.

View Track

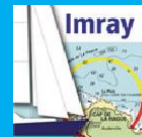
See Track data (distance, max speed, average speed, start time, end time, duration) by tapping **Menu, Tracks**. Show/Hide, Edit and Delete Track.



Measure tool

Tap the ends of the Measuring tool to measure distances and bearings from A to B.





Imray Navigator

Navigation > Routes Add routes

Routes

Routes can span several individual charts and long distances for easy passage planning.

Use the Routes icon to:

Create a route (tap +)
Save a route

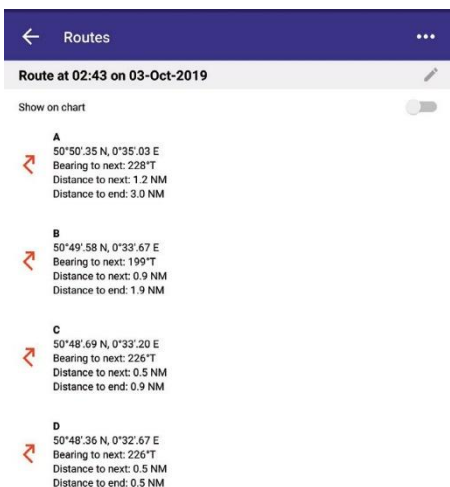
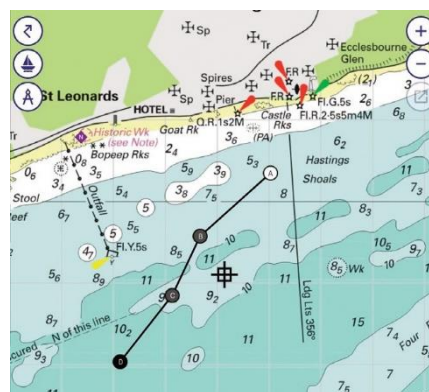
Use the Routes menu to:

Edit routes Select routes Share routes Delete routes Reverse



1. Tap the Routes icon
2. You are now in Routes mode. You have extra options on the menu. Position your cursor and tap + to add a point to your route.

3. Reposition the cursor and tap + again to add the next point. Points are labelled alphabetically. Your first point is white and subsequent points grey. Tap Save. Final point goes black. Route options removed from menu.



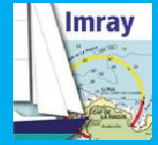
4. Menu > Routes. Select a route to open it. Tap the pencil to rename the route. Make the route visible on the chart using the toggle button. Export, Reverse or Delete the route via the menu.

Import/Export

Imray Navigator will be used as the default to open .gpx route files, or offered as an option depending upon device settings. Imported routes are added to the routes menu.

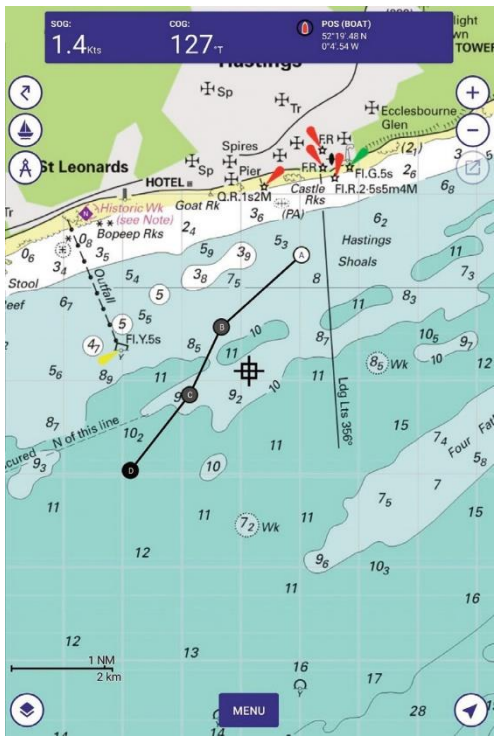
Routes are exported as .gpx files and can be shared via a



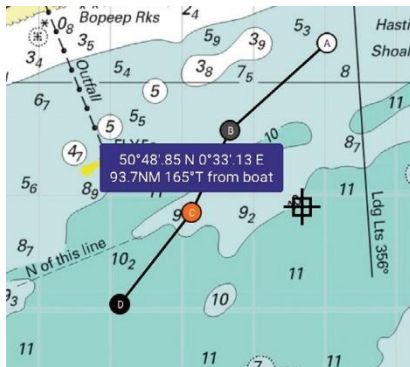


Imray Navigator

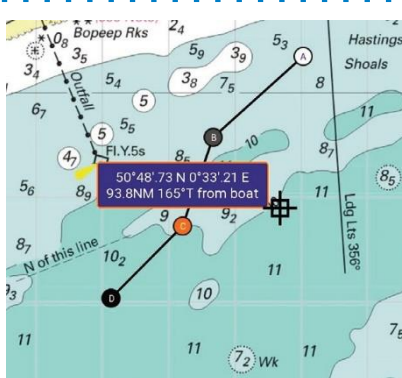
Navigation > Routes Select and Edit



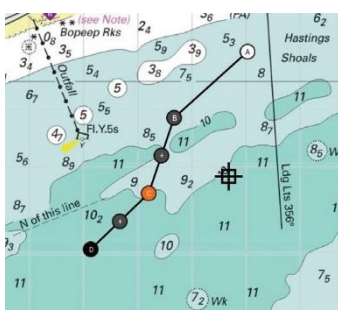
1. Go to Menu > Routes



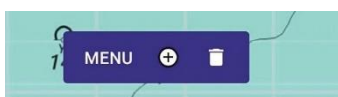
2. Tap once on a route to select it. Use the toggle button to show or hide a route. Scroll to the route on your charts. Tap on a route point to show point information. Point goes orange.



3. Tap to select a route point. Long hold on point to put into edit mode. Outline of information box outline goes orange. Drag point to new position.

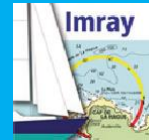


4. Tap to select a route point. From the menu select + to add a point. You have the option of a new point either side of the selected point. Tap + on the line to add a new point.



5. To delete a point, tap to select (orange) and tap the bin (delete)





Imray Navigator

Navigation > Waypoints Add and Manage

Waypoints

Add, manage and share waypoints.

Tap the cursor to activate waypoints:

Add a wavnpoint

Tap a waypoint to:

- View coordinates
- View distance and bearing from boat
- Edit (tap pencil) Delete

Use this menu to:

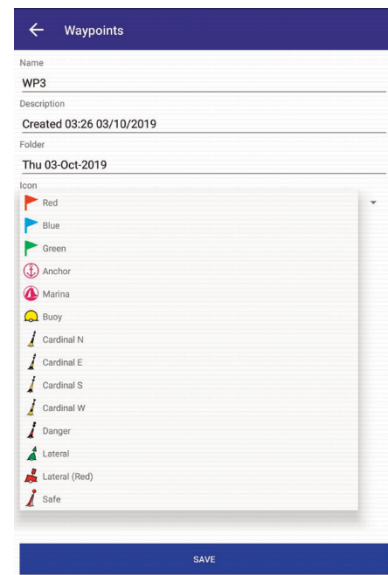
- Edit a waypoint
- Export waypoints
- Delete a waypoint

Add waypoints

1. Tap cursor once. Waypoint icon appears in the menu. Tap to add waypoint.

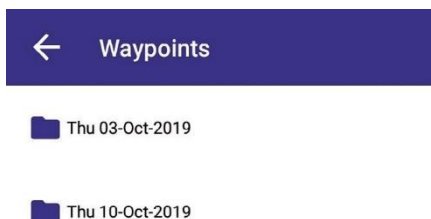


2. Tap waypoint flag to delete or edit the waypoint. Under edit you can rename the waypoint and choose different symbols or marks.

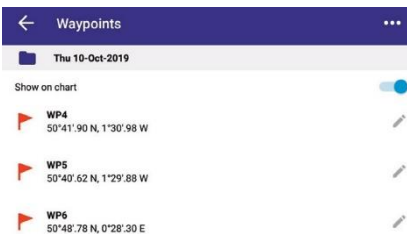


Managing Waypoints

1. Go to Menu > Waypoints
Waypoints are stored in folders



2. Edit a waypoint by tapping the pen icon.
Change name, description or folder name.
Change symbol or mark.



Import/Export

Imray Navigator will be used as the default to open waypoint files, or offered as an option depending upon device settings. Imported waypoints are added to the waypoint menu.
Waypoints are exported as waypoint files and can be shared via a variety of programs.

