

# Imray Correction Notice

ICC28-5

18 June 2025

## Chart C28 WGS 84

Edition 2022

*Versions available:*

*New Edition (corrected to September 2022)*

*Update (corrected to April 2023)*

*Update (corrected to February 2024)*

### NOTES

*Below is a complete list of corrections issued since the 2022 edition of this chart was published.*

*Each correction is issued with an ILNW reference number and year.*

*Corrections are listed chronologically in ascending order.*

*For Update versions of this chart, please check the bottom left corner of the chart to determine the last applied correction.*

*Any further corrections will be applicable from that point onwards.*

#### 1 Approaches to Lowestoft

Insert obstn symbol with assoc lgd *Unexploded Ordnance (2022)* in 52°26'·09N 1°47'·49E (ILNW 459/22)

#### 2 Aldeburgh Ridge (Main chart & Plan F)

Insert depth 2.3m and extend 5m contour to enclose in 52°07'·74N 1°37'·69E. Delete depth 3.5m close NW (ILNW 460/22)

#### 3 Orford Haven (Plan F) (correction amended see ILNW 221/24)

For detailed information about the River Ore entrance consult the accompanying chartlet (survey 02/23). For further details regarding the latest pilotage information of this area see [www.eastcoastpilot.com](http://www.eastcoastpilot.com) (ILNW 116/23)

#### 4 Woodbridge Haven (Main chart & Plan G) (correction amended see ILNW 220/24)

Move:

RW safewater Lt buoy **Woodbridge Haven** Mo(A)15s to 51°58'·24N 1°23'·86E

G con buoy **Mid Knoll** to 51°58'·67N 1°23'·83E (Plan G)

R can buoy **West Knoll** to 51°58'·82N 1°23'·64E (Plan G)

R can buoy **Knoll Spit** to 51°59'·00N 1°23'·48E (Plan G)

G con buoy **Deben** to 51°59'·05N 1°23'·53E (Plan G)

For detailed information about the River Deben consult the accompanying chartlet (survey 02/23). For further details regarding the latest pilotage information of this area see [www.eastcoastpilot.com](http://www.eastcoastpilot.com) (ILNW 117/23)

#### 5 Holm Sand (Plan D)

Insert depth:

1·4m in 52°29'·68N 1°47'·01E. Delete depth 6·6m close S

1·8m in 52°28'·29N 1°47'·70E

1·4m in 52°28'·05N 1°47'·70E. Delete 6·6m Wk close W and 3·3m depth close S

0·9m in 52°27'·71N 1°47'·58E. Delete depth 2·5m close S

Extend 2m contour of Holm Sand E to enclose above changes (ILNW 118/23)

#### 6 Harbour Entrance (Plan C)

Insert depth 2·2m in 52°34'·26N 1°44'·41E

Replace depth:

3·8m with 3·1m in 52°34'·30N 1°44'·40E

4·1m with 3·6m in 52°34'·26N 1°44'·49E (ILNW 122/23)

#### 7 Woodbridge Haven (Plan G)

Insert drying height -0·1m enclosed by 0m contour in 51°58'·73N 1°23'·83E (ILNW 198/23)

#### 8 Sizewell Bank E

Move Y special pillar Lt buoy Fl(5)Y.20s (2 buoys) PA in 52°12'·60N 1°41'·10E to 52°12'·45N 1°41'·06E (ILNW 203/23)

**9 Minsmere Haven & Lowestoft Approaches (Main chart & Plan D)**

Artificial nesting structure construction works are in progress, navigate with caution in the vicinity.

Insert Lt star:

**ANS 1** Fl.Y.5s3M in 52°14'·29N 1°39'·02E (Main chart)

**ANS 2** Fl.Y.5s3M in 52°27'·64N 1°45'·81E (Plan D)

**ANS 3** Fl.Y.2·5s3M in 52°27'·72N 1°45'·82E (Plan D) (ILNW 219/23)

**10 Aldeburgh Ridge (Main chart & Plan F)**

Insert depth 0·9m in 52°06'·84N 1°36'·83E. Extend contour to enclose (ILNW 288/23)

**11 Approaches to Lowestoft**

Insert overfalls symbol in 52°26'·29N 1°46'·84E (ILNW 146/24)

**12 Great Yarmouth N**

Move BY N card pillar Lt buoy **N Scroby** VQ from 52°41'·39N 1°46'·47E to 52°41'·56N 1°46'·53E (ILNW 160/24)

**13 Woodbridge Haven (Plan G) (correction amended see ILNW 48/25)**

Move:

G con buoy **Mid Knoll** to 51°58'·65N 1°23'·78E

R can buoy **West Knoll** to 51°58'·79N 1°23'·69E

R can buoy **Knoll Spit** to 51°58'·95N 1°23'·53E

G con buoy **Deben** to 51°58'·91N 1°23'·58E

For detailed information about the River Deben consult the accompanying chartlet (survey 04/24). For further details regarding the latest pilotage information and aerial photography of this area see [www.eastcoastpilot.com](http://www.eastcoastpilot.com) (ILNW 220/24)

**14 Orford Haven (Plan F) (correction amended see ILNW 49/25)**

Move:

R can buoy **Oxley** to 52°02'·07N 1°27'·70E

For detailed information about the River Ore entrance consult the accompanying chartlet (survey 04/24). For further details regarding the latest pilotage information and aerial photography of this area see [www.eastcoastpilot.com](http://www.eastcoastpilot.com) (ILNW 221/24)

**15 Great Yarmouth Outer Harbour (Plan C)**

Insert depth 9·1m in 52°34'·63N 1°44'·77E and extend 10m contour N to enclose (ILNW 289/24)

**16 Holm Channel**

Insert depth 6·3m in 52°32'·34N 1°48'·82E. Delete depth 7·3m close NW (ILNW 304/24)

**17 Gas Field Decommissioning**

Insert lgd *Gas Field Decommissioning* (see Note) centred on:

53°04'·00N 1°51'·90E

53°01'·20N 1°50'·90E

Add assoc. chart note:

**GAS FIELD DECOMMISSIONING**

Production platforms and associated structures are in the process of being decommissioned. During this period, navigational aids on the platforms may not be reliable. Underwater obstructions may exist following the removal of platforms and associated structures. Consult local notice to mariners issued by the gas field operator for full details. (ILNW 324/24)

**18 Holm Sand (Plan D)**

Insert depth 1·2m in 52°30'·54N 1°48'·48E enc. By 2m contour and delete depth 9·1m close E (ILNW 328/24)

**19 Newarp Banks NW & Cross Sand E**

Insert depth:

9m, enclosed by 10m contour, in 52°46'·60N 1°52'·27E. Delete depth 10·1m close S

7m in 52°43'·73N 1°57'·94E. Extend 10m contour E to enclose. Delete depths 8·7m close SW and 8·8m close NW

9·3m enclosed by 10m contour, in 52°42'·91N 1°58'·30E. Delete depth 10·4m close NE (ILNW 360/24)

**20 South Cross Sand**

Insert depth 6·1m in 52°37'·70N 1°51'·55E and delete depth 8m close by (ILNW 373/24)

## 21 Sizewell Bank

Insert lgd *Sizewell C Marine Works* (see Note) centred on 52°13'·31N 1°39'·43E

Add accompanying note to chart:

### “SIZEWELL C MARINE WORKS

Marine works in support of the construction of the Sizewell C nuclear power

plant are due to take place within the Sizewell C Harbour Authority jurisdiction from 2024 – 2037. Exclusion zones may be established during specific phases of the project. Local Notices to Mariners regarding these works can be accessed from <https://www.szcworkstracker.co.uk/harbour-authority>” (ILNW 404/24)

## 22 Hemsby Hole & Caister Shoal SW

Insert depth:

5m, enc. by 5 contour, in 52°41'·67N 1°43'·67E. Delete depth 6·3m close NW

0·9m, enc. by approx. 2m contour in 52°40'·07N 1°44'·56E

1·7m, enc. by 2m contour in 52°38'·68N 1°44'·51E. Delete depth 2·6m close N (ILNW 456/24)

## 23 Holm Channel & Holm Sand SE

Depths less than charted exist in the approaches to Lowestoft.

Insert depth:

9·4m in 52°33'·63N 1°47'·73E

9·4m in 52°32'·95N 1°48'·69E

6·5m in 52°32'·32N 1°49'·03E

9·4m in 52°30'·22N 1°49'·76E

Navigate with caution in the area. (ILNW 490/24)

## 24 Whiting Bank (Plan F)

Insert depth:

4·2m in 52°01'·40N 1°31'·05E and extend 5m contour S to enclose. Delete depth 7·6m close SE

4·4m in 52°03'·63N 1°33'·26E and extend 5m contour NE to enclose. Delete depth 6·8m close NE (ILNW 498/24)

## 25 Approaches to Lowestoft

Insert G con. Lt buoy **SW Holm** Fl(2)G.5s in 52°27'·24N 1°46'·95E

Move:

YB S cardinal pillar Lt buoy **S Holm** VQ(6)+LFl.10s in 52°26'·63N 1°47'·25E to 52°26'·72N 1°47'·47E

R port pillar Lt buoy with can topmark **Newcome Sand** Q.R in 52°26'·33N 1°47'·16E to 52°26'·43N 1°47'·37E

R can Lt buoy **Stanford** Fl.R.2·5s in 52°27'·36N 1°46'·69E to 52°27'·26N 1°46'·53E

Delete G con. Lt buoy **SW Holm** Fl(2)G.5s in 52°27'·87N 1°46'·99E (ILNW 562/24)

## 26 Lowestoft Approaches, Sanford Channel (Plan D)

Insert G con. Lt buoy **SW Holm** Fl(2)G.5s in 52°27'·24N 1°46'·95E

Move R can Lt buoy **Stanford** Fl.R.2·5s in 52°27'·36N 1°46'·69E to 52°27'·26N 1°46'·53E

Delete G con. Lt buoy **SW Holm** Fl(2)G.5s in 52°27'·87N 1°46'·99E (ILNW 562/24)

## 27 Great Yarmouth Outer Harbour (Plan C)

Insert depth 9m in 52°34'·61N 1°44'·80E and extend 10m contour E to enclose (ILNW 20/25)

## 28 Woodbridge Haven (Main chart & Plan G)

Move:

RW safe water buoy **Woodbridge Haven** Mo(A)15s to 51°58'·46N 1°24'·19E

G con buoy **Mid Knoll** to 51°58'·67N 1°23'·90E (Plan G)

G con buoy **Deben** to 51°58'·86N 1°23'·61E (Plan G)

R can buoy **Knoll Spit** to 51°58'·97N 1°23'·52E (Plan G)

R can buoy **West Knoll** remains in same position as last year.

For detailed information about the River Deben consult the accompanying chartlet (survey 02/25). For further details regarding the latest pilotage information and aerial photography of this area see [www.eastcoastpilot.com](http://www.eastcoastpilot.com) (ILNW 48/25)

## 29 Orford Haven (Main chart & Plan F)

Move:

RW safe water buoy **Orford Haven** LFl.10s to 52°01'·84N 1°27'·98E

R can buoy **Oxley** to 52°02'·05N 1°27'·60E (Plan F)

G con buoy **Weir** to 52°02'·19N 1°27'·57E (Plan F)

For detailed information about the River Ore entrance consult the accompanying chartlet (survey 03/25). For further details regarding the latest pilotage information and aerial photography of this area see [www.eastcoastpilot.com](http://www.eastcoastpilot.com) (ILNW 49/25)

**30 Great Yarmouth Haven (Plan C)**

Insert depth:

5.9m in 52°34'·71N 1°44'·70E and delete 6.3m close SE

7.1m in 52°34'·58N 1°44'·82E and delete 8.2m close SW

3.8m in 52°34'·40N 1°44'·02E and delete 4.5m close NW (ILNW 197/25)



Depths in Metres

This chart is a  
free download

**NOT TO BE USED  
FOR NAVIGATION**



#### Caution

This chart is not to be used for navigation. It is based on a survey made by Trinity House on 28th February 2025. Users are reminded that depths are subject to constant change and consequently this chart should be used with extreme caution as the situation is likely to be different from the one depicted on the date of the survey.

Neither Trinity House nor the publisher will accept any liability for loss, injury or damage incurred by misuse of the data in this chart. Navigators are advised to seek confirmation of the latest situation before attempting to enter the river from the ECP Honorary Port Pilot John White ☎ 01394 270106 or 07803 476621 (mobile), or call *Odd Times* on VHF Ch 08.

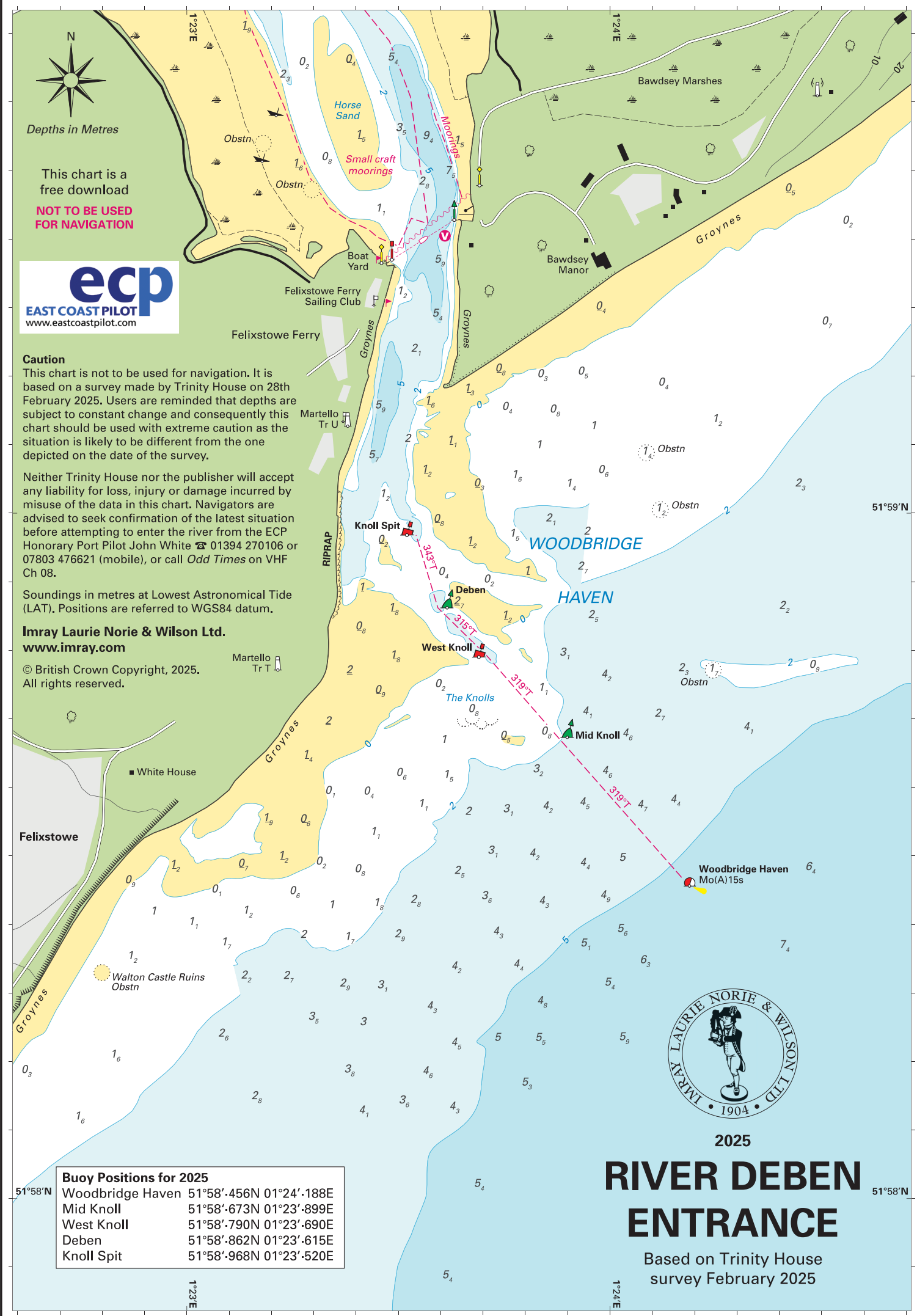
Soundings in metres at Lowest Astronomical Tide (LAT). Positions are referred to WGS84 datum.

**Imray Laurie Norie & Wilson Ltd.**

**www.imray.com**

© British Crown Copyright, 2025.

All rights reserved.



#### Buoy Positions for 2025

Woodbridge Haven	51°58'456N 01°24'188E
Mid Knoll	51°58'673N 01°23'899E
West Knoll	51°58'790N 01°23'690E
Deben	51°58'862N 01°23'615E
Knoll Spit	51°58'968N 01°23'520E



2025

# RIVER DEBEN ENTRANCE

Based on Trinity House  
survey February 2025

**Caution**

This chart is not to be used for navigation. It is based on a survey made by Trinity House on 1st March 2025. Users are reminded that depths are subject to constant change and consequently this chart should be used with extreme caution as the situation is likely to be different from the one depicted on the date of the survey.

Neither Trinity House nor the publisher will accept any liability for loss, injury or damage incurred by misuse of the data in this chart. Navigators are advised to seek confirmation of the latest situation before attempting to enter the river from the ECP Honorary Port Pilot and Orford Harbourmaster Matt Smy ☎ 07528 092635, or call *Chantry* on VHF Ch 08 (although note that he is based at Orford and may be out of radio range from the river entrance).

Soundings in metres at Lowest Astronomical Tide (LAT). Positions are referred to WGS84 datum.

**Imray Laurie Norie & Wilson Ltd.**  
**www.imray.com**

© British Crown Copyright, 2025.

All rights reserved.



52°03'N

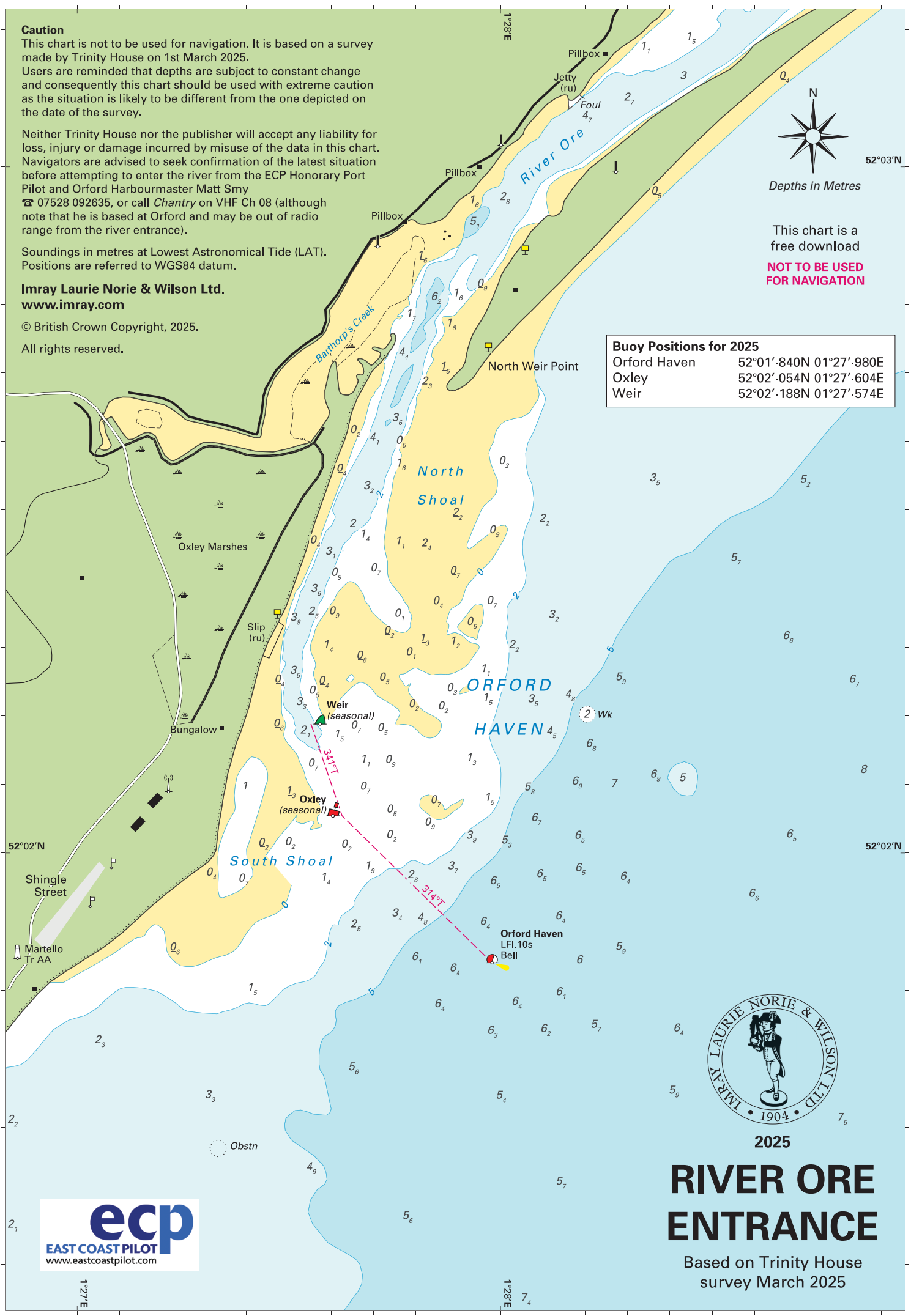
Depths in Metres

This chart is a  
free download

**NOT TO BE USED  
FOR NAVIGATION**

**Buoy Positions for 2025**

Orford Haven	52°01'·840N 01°27'·980E
Oxley	52°02'·054N 01°27'·604E
Weir	52°02'·188N 01°27'·574E



2025

# RIVER ORE ENTRANCE

Based on Trinity House  
survey March 2025