

# Imray Correction Notice ICC65-2

29 November 2023

## Chart **C65** WGS 84 Edition 2016

Versions available:

*New Edition (corrected to July 2016)*

*Update (corrected to August 2017)*

*Update (corrected to August 2018)*

*Update (corrected to August 2019)*

*Update (corrected to March 2021)*

*Update (corrected to March 2022)*

### NOTES

*Below is a complete list of corrections issued since the 2016 edition of this chart was published.*

*Each correction is issued with an ILNW reference number and year.*

*Corrections are listed chronologically in ascending order.*

*For Update versions of this chart, please check the bottom left corner of the chart to determine the last applied correction.*

*Any further corrections will be applicable from that point onwards.*

#### 1 **Mingary Bay**

A wave farm has been established and submarine power cables laid in Mingary Bay.

Insert wave farm sym. centred on 56°41'·42N 6°03'·94W

Yachtsmen are advised to exercise caution in the vicinity. (ILNW 37/17)

#### 2 **Lynn of Lorn (Plan E)**

Insert depth 1·1m enclosed by 2m contour in 56°32'·15N 5°25'·57W. Delete depth 2·5m close W. (ILNW 84/17)

#### 3 **Tobermory Bay (Plan C)**

Delete:

Lgd *Seaplane Operating Area* centred on 56°37'·22N 6°03'·35W

Lt Fl.Y.5s2M in 56°36'·99N 6°03'·49W (ILNW 125/17)

#### 4 **Oban Bay Safe Navigation (Plan G)**

All vessels with a length of 20 metres or more navigating the northern entrance of Oban Bay are requested to broadcast a warning message on VHF Ch 16, followed by further details on Ch 12. A voluntary code for safe navigation exists within the area of Oban Bay. For further information see [www.obanharbour.scot](http://www.obanharbour.scot) (ILNW 302/17)

#### 5 **Cardingmill Bay (Plan G)**

Insert:

Y pillar buoy in 56°24'·65N 5°29'·43W

Y spec. pillar Lt buoy Fl.Y.5s in 56°24'·52N 5°29'·72W (ILNW 308/17)

#### 6 **Oban (Plan G)** (*correction superseded - see ILNW 298/18*)

Insert legend *Marina under const'n* (2017) centred on 56°24'·95N, 5°28'·60W (ILNW 435/17)

#### 7 **Oban (Plan G)**

Insert accompanying block correction centred on 56°24'·98N 5°28'·61W (ILNW 298/18)

#### 8 **Corran Narrows NE**

Insert Lt Fl.5s4M&DirWRG.2s4M in 56°43'·62N 5°13'·83W (ILNW 381/18)

## 9 Castle Bay (Plan A)

New marina facilities have been completed in Castle Bay.

Insert:

Lt Fl.R.4s in 56°57'·27N 7°29'·53W

Jetty, line, joining:

56°57'·25N 7°29'·68W (shore)

56°57'·24N 7°29'·66W

56°57'·26N 7°29'·56W

and

56°57'·25N 7°29'·60W

56°57'·23N 7°29'·59W

56°57'·24N 7°29'·55W

56°57'·27N 7°29'·53W (light) (ILNW 542/18)

## 10 Loch Ceann Traigh

Insert dangerous wreck sym. plus assoc lgd PA in 56°46'·11N 5°54'·07W (ILNW 113/19)

## 11 Point of Ardnamurchan

Amend range of **LT HO**. Fl(2)20s55m22M to 18M in 56°43'·62N 6°13'·56W. AIS remains unchanged. (ILNW 130/19)

## 12 Oban (Plan G)

Insert G con Lt buoy Fl.G.2s:

**No 1** in 56°25'·33N 5°29'·08W

**No 3** in 56°25'·28N 5°29'·08W

**No 5** in 56°25'·22N 5°29'·09W

**No 7** in 56°25'·16N 5°29'·06W

**No 9** in 56°25'·10N 5°28'·95W

Insert R can Lt buoy Fl.R.2s:

**No 2** in 56°25'·35N 5°29'·25W

**No 4** in 56°25'·27N 5°29'·25W

Delete YBY W cardinal pillar Lt buoy VQ(9)10s in 56°25'·19N 5°29'·10W (ILNW 262/19)

## 13 Mull, Loch Spelve

Delete Lt Fl.G.5s3m2M in 56°23'·24N 5°42'·04W (ILNW 470/19)

## 14 Glasnacardoch Bay N

Insert rock which covers & uncovers plus assoc. drying height -2.2m in 56°59'·93N 5°50'·19W (ILNW 599/19)

## 15 Dunstaffnage Bay (Plan F)

Move R port can Lt buoy Fl.R.3s in 56°27'·18N 5°26'·08W to 56°27'·22N 5°26'·09W (ILNW 677/19)

## 16 Loch Scresort, Rum

Insert Lt Fl.R.5s in 57°00'·68N 6°16'·01W. This marks the end of a single jetty. (ILNW 314/20)

## 17 Corpach (Plan D) (*correction superseded see ILNW 362/23*)

Insert lgd Marina under construction centred on 56°50'·55N 5°07'·50W (ILNW 380/20)

## 18 Tobermory (Plan C) (*Correction amended see - ILNW 2/21*)

Insert pontoon joining:

56°37'·22N 6°04'·03W

56°37'·23N 6°03'·94W

Insert Lt:

Fl.G.5s in 56°37'·23N 6°03'·94W

Fl.R.5s in 56°37'·20N 6°03'·94W

Insert lgd Fairway (buoyed) centred on 56°37'·21N 6°03'·76W

Delete mooring buoy **CAL MAC** in 56°37'·24N 6°03'·66W (ILNW 569/20)

## 19 Tobermory (Plan C)

Insert mooring buoy **CAL MAC** in 56°37'·24N 6°03'·66W (ILNW 2/21)

## 20 Fort William (Plan D)

Delete G con Lt buoy Fl.G.3s in 56°49'·23N 5°07'·14W (ILNW 69/21)

## 21 Loch Linnhe, Rubha Cuil-cheanna

Insert Lt Dir.WRG.2s5M & Fl(2)G.8s5M in 56°42'·31N 5°14'·80W (ILNW 213/21)

## 22 Corpach S (Plan D)

Delete dolphin centred on 56°50'·43N 5°07'·95W (ILNW 375/21)

**23 Muck**

Amend leading line from Lt DirFl.WRG.3s in 56°49'·99N 6°13'·70W to 319° (ILNW 425/21)

**24 Coll E**

Delete Y spar Lt buoy *Current Meters* Fl(5)Y.20s in 56°37'·49N 6°24'·07W (ILNW 90/23)

**25 Fort William (Plan D)**

Insert Lt Fl(2)G.8s2m2M in 56°48'·96N 5°07'·02W (ILNW 99/23)

**26 Gunna Sound**

Insert Obsn depth 4·4m plus assoc lgd *ODAS* centred on 56°33'·44N 6°43'·10W (ILNW 188/23)

**27 Sound of Luing (Plan J)**

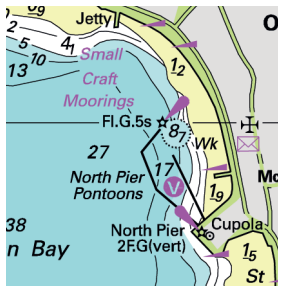
Amend sectors at Lt Fl.WRG.6s9m6/4M in 56°14'·77N 5°40'·18W to 002° - W - 012° - R - 030° - W - 201° - G - 002° (ILNW 191/23)

**28 Corpach (Plan D)**

Replace lgd *Marina under construction* with marina symbol and assoc lgd *Corpach Marina* centred on 56°50'·53N 5°07'·50W.

Corpach Marina can be contacted via:

Tel: 07410 884902. VHF Ch 80. [www.corpachmarina.co.uk](http://www.corpachmarina.co.uk) (ILNW 362/23)



Block correction for C65 (Plan G)  
ILNW 298/18