

# Imray Correction Notice ICA25-1

4 October 2023

## Chart **A25** WGS 84

*Edition 2012*

*Versions available:*

*New Edition (corrected to February 2012)*

*Update (corrected to October 2020)*

*Update (corrected to October 2021)*

*Update (corrected to October 2022)*

*Update (corrected to October 2023)*

### NOTES

*Below is a complete list of corrections issued since the 2012 edition of this chart was published.*

*Each correction is issued with an ILNW reference number and year.*

*Corrections are listed chronologically in ascending order.*

*For Update versions of this chart, please check the bottom left corner of the chart to determine the last applied correction.*

*Any further corrections will be applicable from that point onwards.*

#### 1 **Compass Roses** *(correction deleted)*

The compass roses on this chart incorrectly state that the magnetic variation is decreasing annually. The variation is in fact increasing by the stated amounts. (ILNW 437/12)

#### 2 **St Christopher, Majors Bay (Plan D)**

Insert legend Ferry centred on 17°13'·67N 62°38'·73W. (ILNW 215/14)

#### 3 **Basseterre Bay (Plan C)** *(correction superseded see ILNW 35/20)*

Insert Lt Fl.R.4s3M in 17°17'·10N 62°42'·66W

Move mooring buoy from 17°17'·06N 62°42'·62W to 17°16'·98N 62°42'·63W. (ILNW 337/14)

#### 4 **St Christopher, Basseterre Bay**

Insert Lt Fl.R in 17°17'·10N 62°42'·66W

(ILNW 337/14)

#### 5 **Christophe Harbour Marina (Main chart & Plan D)** *(Correction amended –see ILNW 58/16)*

Delete legend *(under constr.)* centred on 17°14'·71N 62°39'·07W. (ILNW 126/15)

#### 6 **Compass Roses**

The compass roses originally published on this chart did correctly state that the magnetic variation is decreasing annually. (ILNW 303/15)

#### 7 **The Narrows, Cow Rocks (Main chart & Plan D)**

Insert isolated danger Lt beacon Fl. in 17°12'·80N 62°37'·27W (ILNW 376/15)

#### 8 **Christophe Harbour (Plan D)**

Insert accompanying block correction centred on 17°14'·59N 62°39'·62W

##### **Christophe Harbour**

The buoyed approach channel leading to Christophe Harbour has been dredged to 5·6m. Depths around the pontoons are approximately the same.

On entering, contact the harbourmaster on VHF Ch 71 International for the latest controlling depth.

Great Salt Pond (Authorised Access Only) is in the process of being dredged and no detailed information is available at this time. (ILNW 58/16)

#### 9 **Sint Eustatius N & S**

Insert R spher. Lt buoy Fl.5s & assoc. lgd *Marine Farm* in:

17°33'·59N 62°56'·81W

17°25'·93N 62°58'·30W Delete depth 470m close S (ILNW 274/17)

**10 St Christopher, Guana Point (Plan D)**

Replace W pillar Lt buoy FI(2)5s with YBY W cardinal can Lt buoy Q(9)15s in 17°14'·52N 62°39'·72W (ILNW 23/18)

**11 Fort Baai (Plan A)**

Insert depth:

2·4m in 17°36'·97N 63°15'·14W. Delete depth 4·8m close SW

1·6m in 17°36'·97N 63°15'·12W. Delete depth 3·4m close SW

1·3m in 17°36'·96N 63°15'·08W. Delete depth 3·1m close E (ILNW 117/18)

**12 AIDS TO NAVIGATION**

Charted aids to navigation throughout the Eastern Caribbean should be used with caution. Many aids to navigation either moved or were destroyed during recent hurricanes in this region. The replacements and repositioning of these aids is progressing slowly. Yachtsmen are advised to use visual navigation. (Street 2018) (ILNW 574/18)

**13 Montserrat**

Fish Aggregating Devices (FADs) normally marked by light buoys exist in the coastal waters of this chart. Anchoring, dredging, fishing and trawling are prohibited within a radius of 1 mile around these devices. Further FADs may be established without notice.

Insert R spar Lt buoy *FAD* FI in:

16°42'·02N 62°16'·85W

16°46'·05N 62°07'·88W

16°47'·20N 62°07'·83W

(ILNW 245/19)

**14 Basseterre Bay (Plan C) (correction superseded see ILNW 711/19)**

Insert lgd *Works in progress* (2019) centred on 17°17'·35N 62°43'·49W (ILNW 680/19)

**15 Basseterre Bay (Plan C)**

Insert jetty, line, joining:

17°17'·51N 62°43'·44W (quay)

17°17'·44N 62°43'·46W

17°17'·31N 62°43'·55W

Insert Dn sym. In:

17°17'·26N 62°43'·58W

17°17'·28N 62°43'·57W

17°17'·30N 62°43'·56W

Delete Dn sym. In:

17°17'·39N 62°43'·50W

17°17'·38N 62°43'·47W

Delete lgd *Works in progress* (2019) centred on 17°17'·35N 62°43'·49W (ILNW 711/19)

**16 St Christopher, Basseterre Bay**

Insert jetty, line, joining:

17°17'·46N 62°43'·45W (quay)

17°17'·31N 62°43'·55W

Insert Dn sym. In:

17°17'·26N 62°43'·58W

17°17'·30N 62°43'·56W

Delete Dn sym. In:

17°17'·38N 62°43'·50W

17°17'·36N 62°43'·46W (ILNW 711/19)

**17 Nevis W, Monkey Shoals (Main chart & Plan D) (correction superseded see ILNW 155/20)**

Insert YBY W cardinal pillar Lt buoy Q(9)15s in 17°11'·0N 62°41'·0W (ILNW 33/20)

**18 St Christopher, Basseterre SW**

Insert Y special pillar Lt buoy FI.Y in 17°16'·82N 62°44'·80W (ILNW 34/20)

## 19 Basseterre Bay (Plan C)

Insert Lt:

F.2M in 17°17'·14N 62°42'·64W

Fl.R.10s5M in 17°17'·15N 62°42'·60W

Insert Lt star in:

17°17'·40N 62°43'·26W

17°17'·42N 62°43'·22W

17°17'·42N 62°43'·19W

plus assoc. Lt desc. 3xF.2M

Insert Lt star in:

17°17'·27N 62°43'·37W

17°17'·30N 62°43'·37W

plus amend Lt desc. Fl.Y to 3xIso.5s3M in 17°17'·23N 62°43'·37W

Amend Lt desc.:

Fl.R.6s2M to Fl.5s2M in 17°17'·48N 62°42'·69W

Fl.R.4s3M to Fl.R.10s3M in 17°17'·10N 62°42'·66W

F.R.20m to Fl(2)G.10s5M in 17°17'·33N 62°44'·10W

Fl.G.4s4m3M to Fl(3)G.5s in 17°17'·55N 62°43'·50W

Delete Lt:

Q.R.6m5M in 17°17'·66N 62°43'·62W

F.G.11m2M in 17°17'·36N 62°43'·53W (ILNW 35/20)

## 20 St Christopher, Belle Tete & Basseterre Bay

Insert Lt Fl.9M in 17°22'·20N 62°51'·74W

Amend Lt desc.:

Fl.R to Fl.5s in 17°17'·45N 62°42'·68W

F.R to Fl(2)G in 17°17'·33N 62°44'·09W

Fl.Y to Iso.5s in 17°17'·19N 62°43'·36W

Oc.R.2s&F.R to Fl.23M&F.R in 17°18'·75N 62°42'·15W

Delete Lt:

Q.R. in 17°17'·63N 62°43'·62W

F.G.11m2M in 17°17'·36N 62°43'·50W (ILNW 35/20)

## 21 Nevis W, Monkey Shoals (Main chart & Plan D)

Delete YBY W cardinal pillar Lt buoy Q(9)15s in 17°11'·0N 62°41'·0W (ILNW 155/20)

## 22 Marine Management Areas

Marine Management Areas have been established around the coasts of St Christopher (St Kitts) and Nevis (including Monkey Shoals). This extends to approx. 2 miles offshore. These areas have numerous restrictions that apply to fishing, conservation and tourism. Yachtsmen should consult the local port authorities for the latest information. (ILNW 234/20)

## 23 Montserrat (Inset plan)

Insert restricted area joining:

16°42'·89N 62°13'·69W

16°42'·30N 62°14'·80W

16°43'·07N 62°16'·28W

16°45'·50N 62°16'·00W

16°47'·00N 62°14'·83W

16°47'·54N 62°12'·73W

Add assoc lgd *Entry Restricted*

Insert Y special purpose pillar Lt buoy Fl.Y.5s in:

16°47'·70N 62°13'·04W

16°45'·70N 62°14'·00W

16°45'·20N 62°14'·30W

16°43'·40N 62°15'·30W

Insert mooring buoy in 16°42'·10N 62°13'·35W (ILNW 485/21)

## 24 Charlestown & Long Point, Nevis (Main chart & Plan C)

Insert Lt Fl(3)5s5M in 17°08'·33N 62°37'·85W. Delete Lt F.R.5m close E (Main chart & Plan C)

Replace Lt Fl(2)WR.15s with Fl(3)5s5M in 17°06'·48N 62°37'·46W (Main chart) (ILNW 49/22)

## 25 Cades Pt & Dogwood Pt, Nevis (Main chart & Plan D)

Insert Lt:

F.2M in 17°11'·48N 62°37'·10W (Main chart & Plan D)

Fl(2)10s9M in 17°05'·70N 62°36'·40W (Main chart) (ILNW 50/22)

**26 Montserrat**

Delete:

Y special purpose pillar Lt buoy Fl.Y.5s in 16°43'·40N 62°15'·30W

R spar Lt buoy FAD Fl in 16°42'·02N 62°16'·85W (ILNW 446/22)

**27 Basseterre Bay (Main chart & Plan C)**

**Main chart & Plan C**

Insert Lt Iso.R at dolphin in 17°17'·26N 62°43'·58W

**Plan C**

Insert Lt star in:

17°17'·30N 62°43'·56W

17°17'·28N 62°43'·57W

Add assoc. Lt desc. 2xIso.5s3M (ILNW 205/23)

**28 Charlestown (Plan E)**

Delete drying Wk sym. in 17°08'·01N 62°37'·96W (ILNW 206/23)

**29 St Eustatius, Oranje Baai (Plan B)**

Delete G pillar buoy in 17°28'·68N 62°59'·32W (ILNW 218/23)

**Corrections to notes on the chart reverse**

**FORTRESS MARINE**

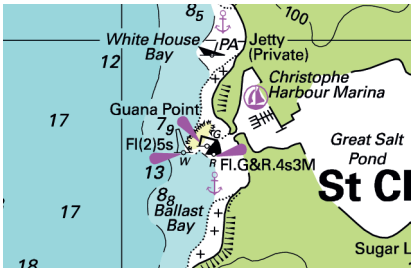
**Second paragraph, first line, amend to:** Due to the almost ever-present surge in the area, a marina has not been established, although the hauling facility is in the process of building breakwaters to create a marina. (ILNW 279/15)

**CHRISTOPHE MARINA** (*Correction superseded - see ILNW 631/15*)

**Add to end of section:** The new marina has been set up for the mega yacht industry not for the normal cruising yacht. (ILNW 280/15)

**CHRISTOPHE MARINA**

**Add** Christophe Harbour super yacht marina is now fully operational. The channel is buoyed, controlling depth unknown. On entering, contact the harbourmaster on VHF Ch 16 for the latest controlling depth information. (DM Street 5/2015) (ILNW 631/15)



Block correction for A25 (Plan D)  
ILNW 58/16