

Imray Correction Notice ICM40-2

26 February 2025

Chart M40 WGS 84

Edition 2014

Versions available:

New Edition (corrected to June 2014)

Update (corrected to February 2018)

Update (corrected to February 2019)

Update (corrected to April 2021)

Update (corrected to April 2022)

Update (corrected to April 2023)

Update (corrected to March 2024)

NOTES

Below is a complete list of corrections issued since the 2014 edition of this chart was published.

Each correction is issued with an ILNW reference number and year.

Corrections are listed chronologically in ascending order.

For Update versions of this chart, please check the bottom left corner of the chart to determine the last applied correction.

Any further corrections will be applicable from that point onwards.

1 **Santa Lucia Bank northeastwards**

Insert circular limit of restricted area, radius 1112m, centred on 43°41'·9N 9°37'·7E. Add assoc. legend *Historic Wreck*. (ILNW 312/14)

2 **Golfo di Salerno**

Move Y spher Lt buoy *Wave recorder* FI(5)Y.20s in 40°27'·44N 14°51'·68E to 40°32'·31N 14°51'·52E. (ILNW 96/15)

3 **Cap de Feno (Main chart & Plan B)**

Amend Lt from Dir.FI(4)15s21m21M and FI(4)WR.15s23m7/4M to FI(4)WR.15s23m10/7M in 41°23'·5N 9°05'·8E. (ILNW 198/15)

4 **Corsica N, E & W Coasts**

Insert obstruction sym & lgd *Obstrn* in 41°42'·3N 8°25'·2E.

Replace Y can Lt buoy FI(4)Y.20s with obstruction sym & lgd *Obstrn* in:

41°42'·3N 8°33'·4E

42°00'·5N 8°34'·2E

42°00'·5N 8°34'·2E

42°30'·2N 8°33'·2E

42°34'·8N 8°34'·2E

42°40'·7N 8°42'·4E

42°43'·4N 8°47'·2E

Replace Y can Lt buoy FI(4)Y.12s with obstruction sym & lgd *Obstrn* in:

42°46'·1N 9°13'·7E

42°51'·5N 9°14'·5E

42°54'·6N 9°13'·9E

42°30'·1N 9°41'·3E

42°25'·0N 9°40'·4E (ILNW 358/15)

5 **Viareggio W**

Insert dangerous Wk sym in 43°50'·57N 10°13'·10E (ILNW 580/15)

6 **Amalfi (Plan C)**

Amend Lt to F.G.8m3M in 40°37'·94N 14°36'·09E (ILNW 78/16)

7 **Vercelli Seamount**

Replace depth 32m with 12m *Rep(2016)* in 41°06'·5N 10°54'·1E (ILNW 169/16)

8 Isole Pontine, I. Zannone

Amend range of Lt to 11M in 40°58'·4N 13°03'·2E. (ILNW 316/16)

9 Corsica Channel TSS

A new traffic separation scheme (TSS) is to be implemented on 1st December 2016 in the Corsica Channel between Cap Corse and Isola Capraia.

Charts will be updated when the TSS is implemented. (ILNW 487/16)

10 In the Corsica Channel Traffic Separation Scheme

A Traffic Separation Scheme (TSS) was implemented in the Corsican Channel on 1st December 2016.

Yachtsmen are reminded that when within the traffic lanes shown on this chart they should proceed in the general direction indicated by the arrows or, if crossing a lane, they should do so as nearly as practicable at right angles to it.

Insert accompanying block correction centred on 42°53'·88N 9°33'·61E (ILNW 569/16)

11 La Caletta E

Delete Y spec. spher. Lt buoy *Wave recorder* Fl(5)Y.20s in 40°37'·0N 9°53'·5E (ILNW 20/17)

12 Anchorages - Biocenosis

Yachtsmen are advised that within the area covered by this chart, the seabed is partially covered with protected biocenosis.

In order to preserve these areas, yachtsmen must anchor on sand after visual examination of the seabed. (ILNW 53/17)

13 St-Raphaël S

Amend Lt to Q.WR.11/8M in 43°24'·4N 6°46'·4E (ILNW 114/17)

14 Golfo di Gaeta

Insert dangerous Wk sym. in 41°14'·51N 13°37'·93E (ILNW 133/17)

15 Livorno W

Insert Y spher. Lt buoy *ODAS* Fl(5)Y.20s in 43°37'·00N 10°00'·00E (ILNW 425/17)

16 Bonifacio Strait (Main chart & Plan B)

Main chart

Amend Lt Oc(2)WR.6s17/14M to Iso.WR.4s18/14M in 41°20'·1N 9°15'·5E

Plan B

Amend Lt:

Iso.R.4s28m6M to Fl(3)R.12s28m6M in 41°23'·21N 9°08'·67E

Oc(2)WR.6s27m17/14M to Iso.WR.4s27m18/14M in 41°20'·07N 9°15'·54E (ILNW 473/17)

17 Toulon S

Insert dangerline joining:

42°49'·8N 5°54'·0E

42°48'·0N 6°04'·2E

42°47'·4N 6°04'·2E

42°47'·4N 5°54'·6E

Plus assoc. lgd *Scientific Instruments*. (ILNW 77/18)

18 Corsica E Coast

Replace Y can Lt buoy Fl(4)Y.12s with obstruction sym & lgd *Obstrn* in:

41°50'·0N 9°36'·1E

41°46'·8N 9°32'·1E

41°43'·6N 9°31'·5E (ILNW 80/18)

19 La Spezia S

Insert dangerous Wk sym. in:

44°00'·7N 9°51'·9E

44°02'·0N 9°56'·0E (ILNW 571/18)

20 Scog. Africa

Amend range of Lt Fl.5s12M to 7M in 42°21'·6N 10°03'·9E (ILNW 671/18)

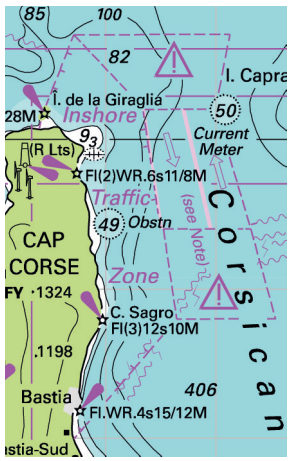
21 Toulon S

Insert circular dangerline, radius 1M, centred on 42°48'·0N 6°10'·0E plus assoc. lgd *Scientific Instruments*. (ILNW 735/18)

22 Îles d' Hyères

Insert circular limit of restricted area, radius 1M, centred on 42°56'·0N 6°19'·0E plus assoc. lgd *Area to be Avoided*. (ILNW 15/19)

- 23 **Isola del Giglio** (*correction superseded see ILNW 222/19*)
Amend range of Lt FI(4)30s23M to 7M in 42°19'·3N 10°55'·2E. AIS remains unchanged (ILNW 55/19)
- 24 **Monte Argentario (Plan A)**
Amend Lt 2F.G.(vert)3M to F.G.7m3M in 42°26'·52N 11°06'·96E (ILNW 56/19)
- 25 **Isola del Giglio**
Amend range of Lt FI(4)30s7M to 23M in 42°19'·3N 10°55'·2E. AIS remains unchanged (ILNW 222/19)
- 26 **Nice**
Amend Lt FI.R.5s20M to FI.R.4s8M in 43°41'·7N 7°17'·7E (ILNW 266/19)
- 27 **Cannes SW**
Amend range of Lt FI(3)WG.12s13/10M to 8/6M in 43°29'·0N 6°56'·00E (ILNW 444/19)
- 28 **Golfo di Salerno, Amalfi (Plan C)**
Insert Lt F.R.7m8M in 40°37'·94N 14°36'·18E (ILNW 548/19)
- 29 **Îles d' Hyères**
Insert Y special can Lt buoy ODAS FI(5)Y.20s in 43°02'·6N 6°35'·3E (ILNW 568/19)
- 30 **Amalfi (Plan C)**
Amend Lt F.G.8m3M to FI.G.5s8m3M in 40°37'·94N 14°36'·09E (ILNW 267/20)
- 31 **Golfo di Follonica**
Delete restricted area centred on 42°54'·1N 10°44'·4E (ILNW 341/21)
- 32 **Formiche di Grosseto N**
Delete Entry Prohibited Area centred on 42°35'·8N 10°51'·5E (ILNW 362/21)
- 33 **La Spezia S**
Delete obstn symbol and assoc lgd *Obstn* in 44°01'·7N 9°49'·2E (ILNW 563/21)
- 34 **Corse, Bastia**
Amend Lt FI.WR.4s15/12M to Q.R.14M in 42°41'·8N 9°27'·6E (ILNW 107/22)
- 35 **Corse, Capo Sagro**
Amend range of Lt FI(3)12s10M to 12M in 42°47'·9N 9°29'·7E (ILNW 108/22)
- 36 **Salerno (Plan C)**
Insert yacht harbour symbol centred on 40°40'·43N 14°45'·28E (ILNW 25/23)
- 37 **Cap Corse N**
Insert obstn depth 6m in 43°03'·1N 9°19'·4E (ILNW 243/23)
- 38 **Sardegna W**
Delete Y superbuoy FI.Y.20s in 39°54'·4N 7°34'·5E (ILNW 393/23)
- 39 **Î. de la Giraglia, Corse N**
Amend range of Lt to 15M in 43°01'·6N 9°24'·3E (ILNW 123/24)
- 40 **Salerno (Main chart & Plan C)**
Delete Lt FI.3s11M in 40°40'·33N 14°45'·33E (ILNW 32/25)



Block correction for M40
ILNW 569/16