

Imray Correction Notice

ICY2-2SF

16 February 2024

Chart Y2^{WGS 84}

Edition 2022

Versions available:

New Edition (corrected to September 2022)

Update (corrected to April 2023)

Update (corrected to February 2024)

NOTES

Below is a complete list of corrections issued since the 2022 edition of this chart was published.

Each correction is issued with an ILNW reference number and year.

Corrections are listed chronologically in ascending order.

For Update versions of this chart, please check the bottom left corner of the chart to determine the last applied correction.

Any further corrections will be applicable from that point onwards.

1 **Aldeburgh Ridge**

Insert depth 2.3m and extend 5m contour to enclose in 52°07'·74N 1°37'·69E. Delete depth 3.5m close NW (ILNW 460/22)

2 **Orford Haven**

For detailed information about the River Ore entrance consult the accompanying chartlet (survey 02/23). For further details regarding the latest pilotage information of this area see www.eastcoastpilot.com (ILNW 116/23)

3 **Aldeburgh Ridge**

Insert depth 0·9m in 52°06'·84N 1°36'·83E. Extend contour to enclose (ILNW 288/23)

Caution

This chart is not to be used for navigation. It is based on a survey made by Trinity House on 8th February 2023. Users are reminded that depths are subject to constant change and consequently this chart should be used with extreme caution as the situation is likely to be different from the one depicted on the date of the survey.

Neither Trinity House nor the publisher will accept any liability for loss, injury or damage incurred by misuse of the data in this chart. Navigators are advised to seek confirmation of the latest situation before attempting to enter the river from the ECP Honorary Port Pilot and Orford Harbourmaster Matt Smy ☎ 07528 092635, or call *Chantry* on VHF Ch 08 (although note that he is based at Orford and may be out of radio range from the river entrance).

Soundings in metres at Lowest Astronomical Tide (LAT). Positions are referred to WGS84 datum.

Imray Laurie Norie & Wilson Ltd.
www.imray.com

© British Crown Copyright, 2023.

All rights reserved.



52°03'N

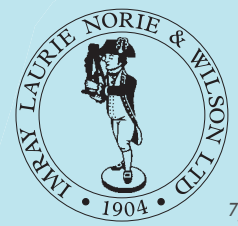
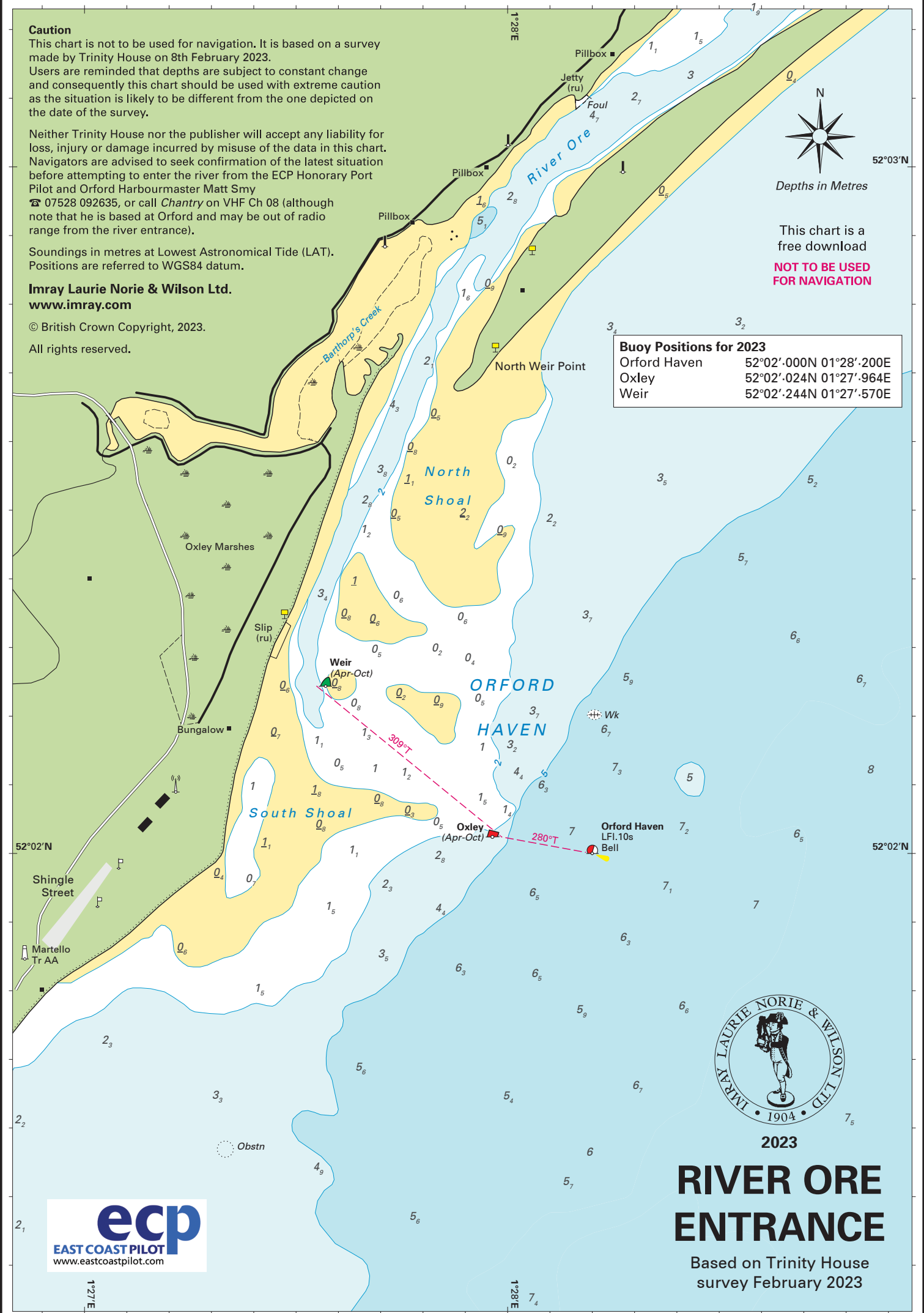
Depths in Metres

This chart is a free download

NOT TO BE USED FOR NAVIGATION

Buoy Positions for 2023

Orford Haven	52°02'.000N 01°28'.200E
Oxley	52°02'.024N 01°27'.964E
Weir	52°02'.244N 01°27'.570E



2023
RIVER ORE ENTRANCE

Based on Trinity House survey February 2023