

# Imray Correction Notice ICA301

26 February 2025

## Chart **A301** WGS 84

*Edition 2006*

*Versions available:*

*New Edition (Corrected to December 2006)*

### NOTES

*Below is a complete list of corrections issued since the 2006 edition of this chart was published.*

*Each correction is issued with an ILNW reference number and year.*

*Corrections are listed chronologically in ascending order.*

#### 1 **Havre de la Trinité (Plan A)**

Insert Lts at the following buoys:

Fl(3)R.12s at **TR7** in 14°44'·95N 60°57'·49W

Fl(3)G.12s at **TR6** in 14°44'·80N 60°57'·37W

Fl(4)G.15s at **TR8** in 14°44'·63N 60°57'·35W

Fl(4)R.15s at **TR9** in 14°44'·48N 60°57'·58W (ILNW 121/08)

#### 2 **Approaches to Havre de la Trinité**

Delete G can buoy **TR2** in 14°47'·58N 60°57'·91W (ILNW 428/09)

#### 3 **Cape Ferre eastwards**

Insert legend *Fish Traps (buoyed) (PA)* centred on 14° 27'·5N 60°44'·8W (ILNW 136/10)

#### 4 **Cul-de-Sac Marin (Plan B)**

Insert R pillar Lt buoy Fl(3)R.12s with topmk in 14°27'·14N 60°53'·06W.

Delete Lt bn Fl(3)R.12s close by. (ILNW 449/10)

#### 5 **Cul-de-Sac Marin (Plan B) (correction superseded see ILNW 453/18)**

Substitute:

G con Lt buoy with rectangular topmk for **MA10** Lt bn in 14°28'·07N 60°52'·14W

G con Lt buoy with rectangular topmk for **MA8** Lt bn in 14°28'·01N 60°52'·20W

G pillar Lt buoy with rectangular topmk for **MA6** Lt bn in 14°27'·67N 60°52'·58W

All Lt characteristics remain the same.

Substitute R con Lt buoy with triangular topmk **MA5** Fl(4)R.6s for Lt bn **MA5** Fl(4)R.15s in 14°27'·73N 60°52'·47W (ILNW 416/11)

#### 6 **Havre de la Trinité, Banc Mitan (Main chart & Plan A)**

Replace G can buoy **TR4** with G pillar Lt buoy **TR4** Fl.G.2·5s with rectangular topmk in 14°45'·93N 60°56'·98W (ILNW 074/12)

#### 7 **La Trinité (Plan A)**

Move Lt bns:

**TR11** Fl(5)R.20s to 14°44'·38N 60°57'·68W and amend Lt charac. to Q.R

**TR10** Fl(5)G.20s to 14°44'·38N 60°57'·65W and amend Lt charac to Q.G (ILNW 075/12)

#### 8 **Cul-de-Sac Marin (Plan B) (correction superseded see ILNW 453/18)**

Delete Lts:

F.Vi in 14°28'·12N 60°52'·40W

F.Vi close SE (ILNW 222/12)

#### 9 **îlet Cabrits (correction superseded – see ILNW 150/17)**

Reduce range of Lt from 21M to 15M in 14°23'·54N 60°52'·09W (ILNW 292/12)

#### 10 **Tartane N**

Insert R pillar Lt buoy Fl.R.2·5s with triangular topmark in 14°45'·84N 60°55'·24W (ILNW 515/15)

#### 11 Tartane

Insert G con Lt buoy with square topmark Fl.G.2.5s in 14°45'·74N 60°55'·27W (ILNW 601/15)

#### 12 I. Bouchard N

Insert R pillar Lt buoy **PCM** with triangular topmark Fl.R.2.5s in 14°37'·90N 60°51'·45W.

Delete former **PCM** Lt buoy close W. (ILNW 602/15)

#### 13 South & East Coast buoyage (correction amended see ILNW 653/21)

Insert Y spec. spar buoy in 14°27'·27N 60°56'·43W

Delete Y spherical Lt buoy *Wave Recorder* in 14°39'·23N 60°48'·77W (ILNW 404/16)

#### 14 Cul-de-Sac Marin (Plan B) (correction superseded see ILNW 453/18)

Insert:

GRG con. buoy in 14°27'·96N 60°52'·50W

R con. Lt buoy **MA9** Fl.R.2.5s in 14°27'·98N 60°52'·15W

Amend name of R con. Lt buoy **MA9** Fl(2)R.6s to **MA11** in 14°28'·04N 60°52'·08W

Delete YBY S card. con. buoy in 14°28'·09N 60°52'·49W (ILNW 118/17)

#### 15 Îlet Cabrits

Amend range of Lt to 21M in 14°23'·54N 60°52'·09W (ILNW 150/17)

#### 16 Cul-de-Sac Marin (Main chart & Plan B)

##### Main chart

Insert no anchorage sym in 14°27'·51N 60°54'·85W

Delete:

Y con Lt buoy Fl(5)Y.20s in 14°27'·36N 60°55'·40W

anchorage sym in:

14°28'·00N 60°55'·30W

14°27'·54N 60°54'·63W

14°27'·12N 60°54'·11W

##### Plan B

Insert no anchorage sym in 14°27'·03N 60°54'·17W (ILNW 367/17)

#### 17 Cul-de-Sac Marin (Plan B)

Insert accompanying block correction centred on 14°27'·99N 60°52'·41W (Doyle/Street 9/2018) (ILNW 453/18)

#### 18 AIDS TO NAVIGATION

Charted aids to navigation throughout the Eastern Caribbean should be used with caution. Many aids to navigation either moved or were destroyed during recent hurricanes in this region. The replacements and repositioning of these aids is progressing slowly. Yachtsmen are advised to use visual navigation. (Street 2018) (ILNW 574/18)

#### 19 Anse Mabouyas, Pte les Fous

Insert outfall pipeline joining:

14°27'·87N 60°56'·18W

14°27'·29N 60°56'·46W (ILNW 422/21)

#### 20 Approaches to Havre du Robert - (correction amended see ILNW 322/23)

Insert drying height -0.3m in 14°39'·84N 60°50'·64W. Delete depth 1.0m close W

Amend:

**R1** Lt buoy to Fl.R.2.5s (*exting*) in 14°41'·01N 60°52'·51W

**R2** Lt buoy to Fl.G.2.5s (*exting*) in 14°40'·63N 60°52'·65W

**PL** Lt buoy to VQ(3)5s (*exting*) in 14°40'·48N 60°55'·72W

**GL** Lt buoy to Q(3)10s (*exting*) in 14°40'·09N 60°55'·59W (ILNW 550/21)

#### 21 Pte les Fous S

Delete Y special purpose spar buoy in 14°27'·27N 60°56'·43W (ILNW 653/21)

#### 22 Cul-de-Sac du Marin (Plan B)

Move G can buoy from 14°27'·99N 60°52'·58W to 14°27'·85N 60°52'·58W

Delete GRG con buoy in 14°27'·96N 60°52'·50W

Insert GRG preferred channel to starboard can Lt buoy Fl(2+1)G.6s in 14°27'·84N 60°52'·49W (ILNW 51/22)

#### 23 Havre du Robert

Insert dangerous wk sym in 14°39'·97N 60°55'·35W (ILNW 145/23)

**24 Havre du Robert**

Remove the lgd (*exting*) from Lt buoy:

**R1** in 14°41'·02N 60°52'·51W

**R2** in 14°40'·61N 60°52'·63W

**PL** in 14°40'·46N 60°55'·72W

**GL** in 14°40'·11N 60°55'·58W (ILNW 322/23)

**25 Pte du Marin (Main chart & Plan B)**

Amend range of Lt from 9-6M to 6M in 14°27'·06N 60°53'·03W (ILNW 350/23)

**26 Cul-de-Sac Marin (Plan B)**

Move **MA5** R con Lt buoy from 14°27'·73N 60°52'·48W to 14°27'·55N 60°52'·61W

Insert R con Lt buoy **MA7** VQ.R in 14°27'·68N 60°52'·46W

Amend **MA6** Lt buoy to VQ.G in 14°27'·66N 60°52'·59W

Amend designation:

**MA7** Lt buoy to **MA9** in 14°27'·83N 60°52'·39W

**MA9** Lt buoy to **M11** in 14°27'·97N 60°52'·15W

**MA11** Lt buoy to **MA13** in 14°28'·04N 60°52'·08W (ILNW 93/24)

**27 Approches to La Trinité**

Amend Lt at R con Lt buoy **TR1** Fl.R.4s to Q.R in 14°48'·20N 60°58'·78W (ILNW 38/25)

**28 Havre de la Trinité (Plan A)**

Amend Lt at R con Lt buoy **TR9** Fl(4)R.15s to Q.R in 14°44'·49N 60°57'·57W (ILNW 39/25)

**Corrections to notes on the chart reverse**

**CUL-DE-SAC MARIN**

**Add new paragraph to end of section:** Because the yacht harbour has become incredibly crowded, making it difficult to find space at the dock or mooring field, it might be advisable to anchor off Sainte-Anne and visit Le Marin by dinghy. (ILNW 168/13)

**CUL-DE-SAC MARIN**

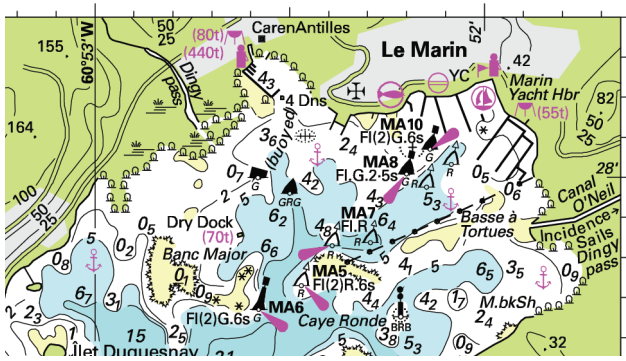
**Add to end of fourth paragraph:** The shipyard hauling facility is undergoing major expansion in summer 2015. (ILNW 284/15)

**EAST COAST**

**Add to end of fifth paragraph:** The Cruiser's Guide has recently been updated and is now in a new format. Text is French only but, if used alongside this chart and *Street's Guide Martinique to Trinidad*, all will be clear even if you do not speak French. (ILNW 285/15)

**MOUILLAGE DE SAINTE ANNE**

**Replace second paragraph with** The anchorage has become very crowded. The yellow buoys restricting anchoring have been largely removed or moved well inshore to protect the swimming area. (DM Street 3/2015) (ILNW 632/15)



Block correction for A301 (Plan B)  
ILNW 453/18