

Imray Correction Notice ICC57-2

13 March 2024

Chart **C57** WGS 84

Edition 2017

Versions available:

New Edition (corrected to April 2017)

Update (corrected to April 2018)

Update (corrected to April 2019)

Update (corrected to April 2020)

Update (corrected to March 2021)

Update (corrected to March 2022)

Update (corrected to March 2023)

Update (corrected to February 2024)

NOTES

Below is a complete list of corrections issued since the 2017 edition of this chart was published.

Each correction is issued with an ILNW reference number and year.

Corrections are listed chronologically in ascending order.

For Update versions of this chart, please check the bottom left corner of the chart to determine the last applied correction.

Any further corrections will be applicable from that point onwards.

1 **Tuskar Rock NW**

Amend Lt descriptions at buoys:

S Long FI(2)G.6s to FI.G.6s (sync) in 52°14'·74N 6°15'·80W

Splaugh FI(2)R.6s to FI.R.6s (sync) in 52°14'·36N 6°16'·76W. AIS remains unchanged. (ILNW 463/17)

2 **Holdens Bed**

Amend duration of G con Lt buoy **W Holdens** FI(3)G.10s to 9s in 52°15'·76N 6°18'·74W (ILNW 572/17)

3 **Tuskar Rock S**

Delete racon sym. and assoc. lgd AIS at YB S cardinal pillar Lt buoy **South Rock** Q(6)+LFI.15s in 52°10'·88N 6°12'·82W (ILNW 151/18)

4 **Roche's Point (Main chart & Plan B)**

Amend range of Lt to 18/12M plus insert racon sym and assoc. lgd AIS in 51°47'·58N 8°15'·29W (ILNW 152/18)

5 **Dunmore East Harbour (Plan G)**

Insert lgd *Less water reported (2018)* angled 150° centred on 52°08'·95N 6°59'·42W (ILNW 472/18)

6 **Cork Lower Harbour (Plan B)**

Insert Lgd *Works (2018)* centred on:

51°50'·08N 8°19'·39W

51°50'·10N 8°18'·20W (ILNW 543/18)

7 **Dunmore East (Plan F)**

Amend Lt:

FI.R to FI(3)R in 52°08'·98N 6°59'·40W

FI.G to FI(3)G in 52°08'·96N 6°59'·49W (ILNW 585/18)

8 **Dunmore East (Plan G)**

Amend Lt:

FI.R.2s6m4M to FI(3)R.10s6m4M in 52°08'·98N 6°59'·40W

FI.G.2s6m4M to FI(3)G.10s6m4M in 52°08'·96N 6°59'·49W (ILNW 585/18)

9 **Cork Lower Harbour (Plan B)**

Delete R can Lt buoy **RA2** Q.R in 51°50'·15N 8°19'·51W (ILNW 22/19)

10 Ballycotton Island SW

Move R can Lt buoy **The Smiths** Fl(3)R.10s in 51°48'·59N 8°00'·75W to 51°48'·43N 8°00'·60W (ILNW 390/19)

11 River Barrow (Plan F)

Depths are reported to be less than charted in the River Barrow north of Barrow Bridge (52°17'·31N 7°00'·54W). Yachtsmen are advised to exercise caution when in the vicinity. (ILNW 383/20)

12 Kinsale Head Gas Field

Insert lgd *Gas Field Decommissioning* (see Note) centred on 51°18'·82N 8°02'·71W

Add chart note:

Production platforms and associated structures are currently being decommissioned. During the works, aids to navigation may be unreliable and certain features may not be shown (ILNW 628/20)

13 Dunmore East Harbour (Plan G)

Insert minor lt 2F.G(vert) in 52°08'·87N 6°59'·48W (ILNW 11/21)

14 Dunmore East Harbour (Plan G)

Insert accompanying block correction centred on 52°08'·92N 6°59'·43W (ILNW 47/21)

15 Cobh (Plan B)

Insert pontoon joining:

51°50'·80N 8°18'·53W

51°50'·76N 8°18'·47W

51°50'·74N 8°18'·48W

Insert minor G Lt in:

51°50'·76N 8°18'·47W

51°50'·74N 8°18'·48W (ILNW 164/21)

16 Kinsale Head Gas Field

Insert racon sym and assoc. lgd AIS at platform:

Kinsale A-East in 51°22'·20N 7°56'·79W

Kinsale B-West in 51°21'·62N 8°01'·09W (ILNW 167/21)

17 Kilmore S (Plan H)

Insert obstruction with a depth of:

1.2m in 52°09'·80N 6°35'·21W

1.4m in 52°09'·59N 6°35'·25W (ILNW 194/21)

18 Kilmore Spit S (Plan H)

Insert depth 0.6m in 52°09'·86N 6°34'·48W. Extend dangerline S to enclose (ILNW 472/21)

19 Drumdowney Point, Swing Bridge (Plan F)

Add additional G Lt flash to existing R Lt in:

52°16'·86N 7°00'·32W

52°16'·82N 7°00'·29W (ILNW 207/22)

20 Tuskar Rk

Amend range of Lt Q(2)7·5s33m24M to 18M in 52°12'·18N 6°12'·43W (ILNW 384/22)

21 Cork Lower Harbour W (Plan B)

Work is complete on the container terminal centred on 51°50'·08N 8°19'·34W

Insert coastline joining:

51°49'·97N 8°19'·42W

51°49'·97N 8°19'·45W

51°50'·16N 8°19'·48W

51°50'·23N 8°19'·34W

51°50'·22N 8°19'·31W

51°50'·17N 8°19'·30W

51°50'·06N 8°19'·00W

Insert pontoon between 51°50'·08N 8°18'·20W and 51°50'·12N 8°18'·26W. Delete assoc lgd *Works (2018)* (ILNW 436/22)

22 Kinsale Head Gas Field

Delete platform sym and assoc racon and lgd AIS:

KINSALE A-EAST in 51°22'·20N 7°56'·79W

KINSALE B-WEST in 51°21'·64N 8°01'·10W (ILNW 6/23)

23 Waterford S

Insert lgd *Scientific Instruments* centred on:

52°00'·22N 7°27'·02W

51°59'·66N 7°11'·95W

52°01'·69N 6°58'·43W (ILNW 276/23)

24 East Pier, Dunmore East Harbour (Plan G)

Move Lt Fl(3)R.10s6m4M from 52°08'·98N 6°59'·40W to 52°08'·99N 6°59'·39W (ILNW 323/23)

25 Reed Bank (Plan D)

Delete Y special purpose Lt bn **Pontoon** Fl.Y.5s2M in 51°57'·76N 7°50'·67W (ILNW 359/23)

26 Waterford-Ferrybank (Plan F)

Insert lgd Bridge under constn in 52°15'·90N 7°06'·60W (ILNW 33/24)

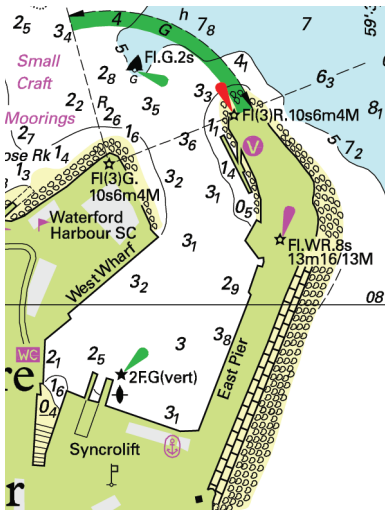
27 Old Head of Kinsale SE

Amend lgd (*see Note*) *Gas Field Decommissioning* (*see Note*) to (*disused*) at

Kinsale Head Gas Field in 51°19'·0N 8°03'·0W.

Replace (*see Note*) with (*disused*) at *Ballycotton Gas Field* in 51°26'·0N 8°09'·0W.

Delete chart notes **Oil and Gas Fields** and **Kinsale Head Gas Field** (ILNW 147/24)



Block correction for C57 (Plan G)
ILNW 47/21