

Caution

This chart is not to be used for navigation. It is based on a survey made by Trinity House on 1st March 2025. Users are reminded that depths are subject to constant change and consequently this chart should be used with extreme caution as the situation is likely to be different from the one depicted on the date of the survey.

Neither Trinity House nor the publisher will accept any liability for loss, injury or damage incurred by misuse of the data in this chart. Navigators are advised to seek confirmation of the latest situation before attempting to enter the river from the ECP Honorary Port Pilot and Orford Harbourmaster Matt Smy ☎ 07528 092635, or call *Chantry* on VHF Ch 08 (although note that he is based at Orford and may be out of radio range from the river entrance).

Soundings in metres at Lowest Astronomical Tide (LAT). Positions are referred to WGS84 datum.

Imray Laurie Norie & Wilson Ltd.
www.imray.com

© British Crown Copyright, 2025.

All rights reserved.



52°03'N

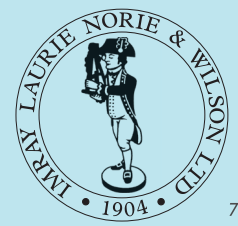
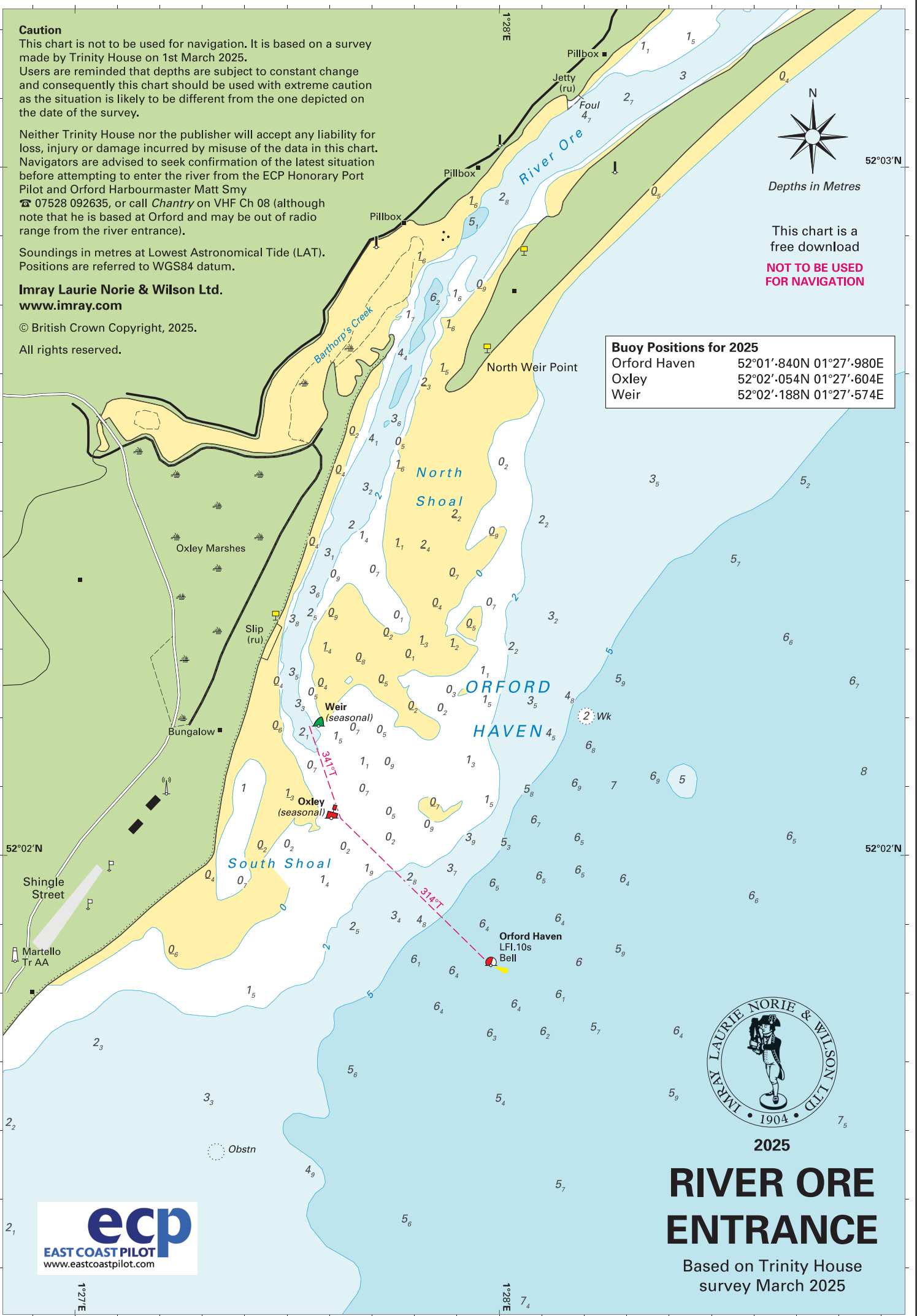
Depths in Metres

This chart is a free download

NOT TO BE USED FOR NAVIGATION

Buoy Positions for 2025

| | |
|--------------|-------------------------|
| Orford Haven | 52°01'.840N 01°27'.980E |
| Oxley | 52°02'.054N 01°27'.604E |
| Weir | 52°02'.188N 01°27'.574E |



2025

RIVER ORE ENTRANCE

Based on Trinity House survey March 2025



1°27'E

1°28'E

52°02'N

52°02'N

2₁

2₂

2₃

2₄

2₅

2₆

2₇

2₈

2₉

3₀

3₁

3₂

3₃

3₄

3₅

3₆

7₄

7₅

7₆

7₇

7₈

7₉

8₀

8₁

8₂

8₃

8₄

8₅

8₆

8₇

8₈

8₉

9₀

9₁

9₂

9₃

7₅

7₆

7₇

7₈

7₉

8₀

8₁

8₂

8₃

8₄

8₅

8₆

8₇

8₈

8₉